



- LEGEND**
- LGA boundaries
 - Erosion**
 - Severe Erosion
 - Moderate Erosion
 - Light Erosion
 - Seawall**
 - Poor Condition Seawall
 - Fair Condition Seawall
 - Good Condition Seawall
 - Stormwater Outlets & GPTs**
 - Piped Drainage
 - Natural Drainage
 - Concrete Drainage
 - Observed Overflow Outlet
 - Observed Natural Drainage
 - Observed GPT

Erosion E91
 - Construction of an environmentally friendly seawall along the beach (Option E5 or E6)
 - Sand replenishment using the sand from the extensive shallow facing the park (Option E9)
 - Sizing of the GPT to avoid overflows

Seawall S58
 - Top of the seawall needs maintenance as well as the eastern end as some water is leaking from the bottom of the seawall (Option S9)
 - Objects can be placed along or in front of the vertical seawalls to increase colonisation by various species (Option S7)

DATE 16/04/2010

0 75 150
metres

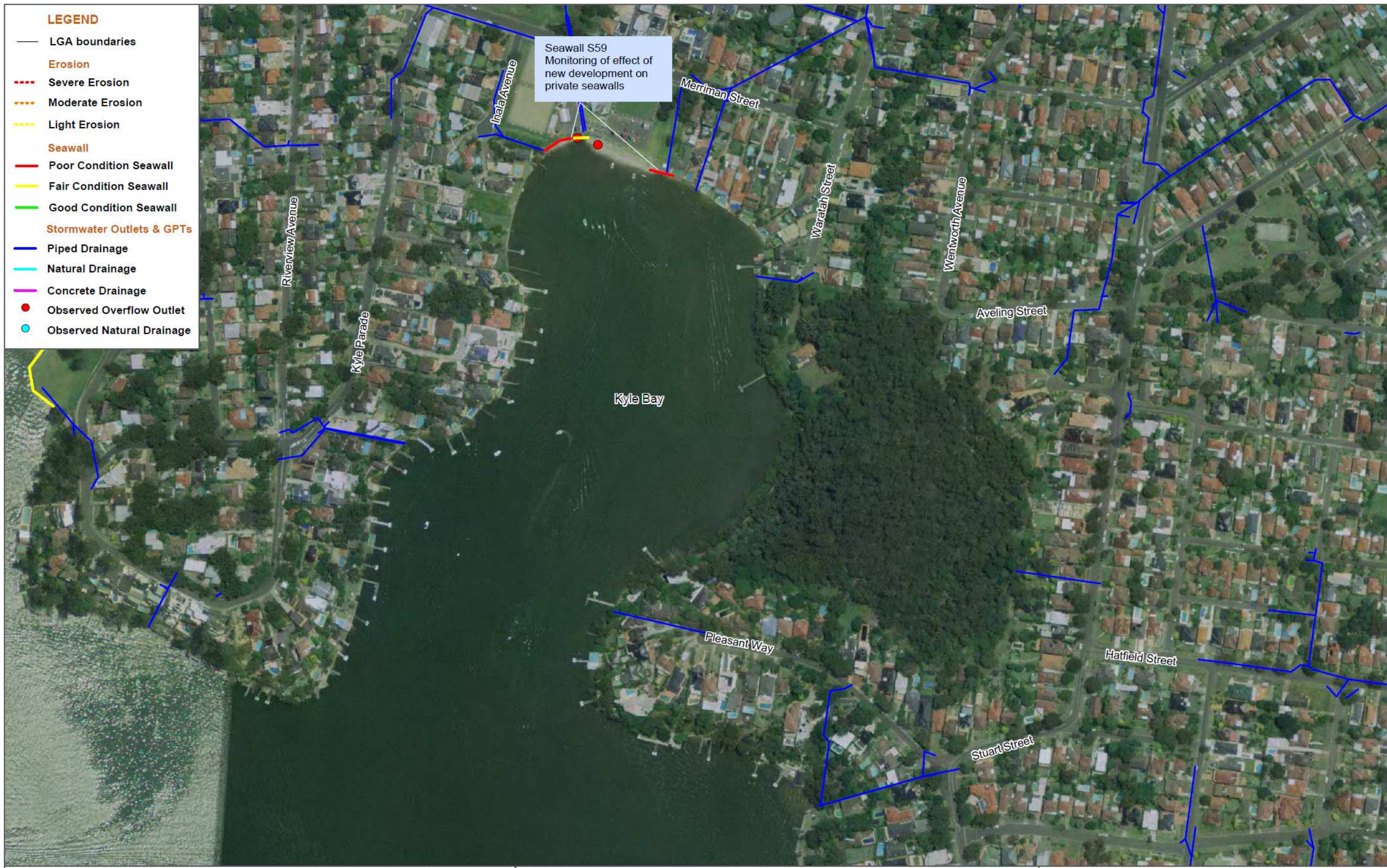
COORDINATE SYSTEM
GDA 94 Zone 56

FIG NO. 31 FIGURE TITLE Connells Bay

PROJECT NO. 3001765 PROJECT TITLE Georges River Data Compilation and Estuary Processes Study

CREATED BY M. GLATZ LOCATION I:\projects\3001765 - Georges River Estuary Process Study\009DATA\GIS\MapInfo Workspaces

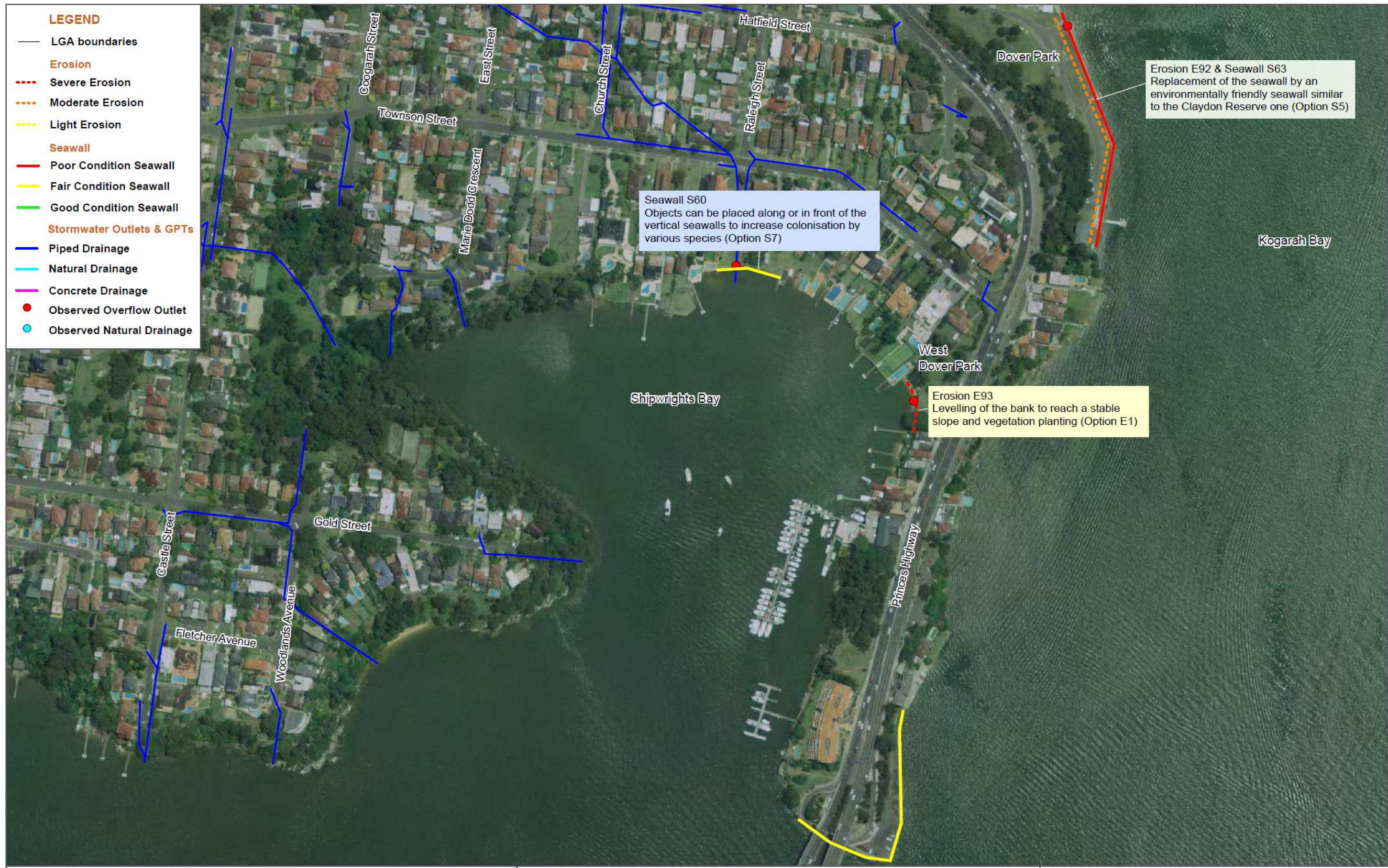




DATE	16/04/2010	0	75	150	COORDINATE SYSTEM
metres					GDA 94 Zone 56
PROJECT NO.	3001765	PROJECT TITLE	Georges River Data Compilation and Estuary Processes Study		

FIG NO.	32	FIGURE TITLE	Kyle Bay		
CREATED BY	M. GLATZ	LOCATION	I:\projects\3001765 - Georges River Estuary Process Study\009DATA\GIS\Mapinfo Workspaces		

The block contains the logo of the local government (a stylized 'S' with 'narran' text) and the logo for SMEC, which features a globe and the company name.



LEGEND

- LGA boundaries
- Erosion**
- Severe Erosion
- Moderate Erosion
- Light Erosion
- Seawall**
- Poor Condition Seawall
- Fair Condition Seawall
- Good Condition Seawall
- Stormwater Outlets & GPTs**
- Piped Drainage
- Natural Drainage
- Concrete Drainage
- Observed Overflow Outlet
- Observed Natural Drainage

Seawall S60
Objects can be placed along or in front of the vertical seawalls to increase colonisation by various species (Option S7)

Erosion E92 & Seawall S63
Replacement of the seawall by an environmentally friendly seawall similar to the Claydon Reserve one (Option S5)

Erosion E93
Levelling of the bank to reach a stable slope and vegetation planting (Option E1)

DATE 18/04/2010

0 75 150 metres

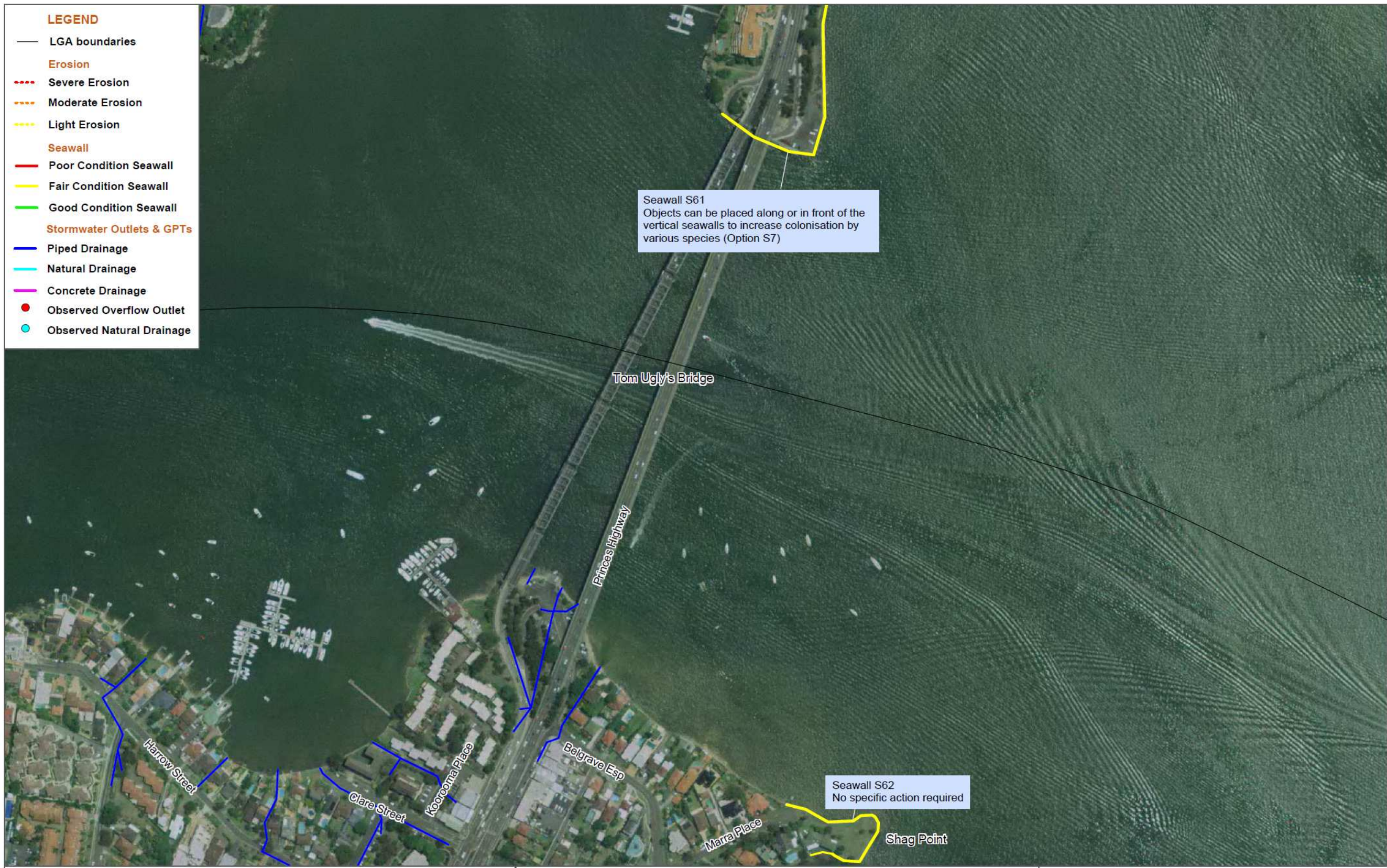
COORDINATE SYSTEM
GDA 94 Zone 56

FIG NO. 33 FIGURE TITLE Shipwright Bay

PROJECT NO. 3001765 PROJECT TITLE Georges River Data Compilation and Estuary Processes Study

CREATED BY M. GLATZ LOCATION I:\projects\3001765 - Georges River Estuary Process Study\009DATA\GIS\MapInfo Workspaces







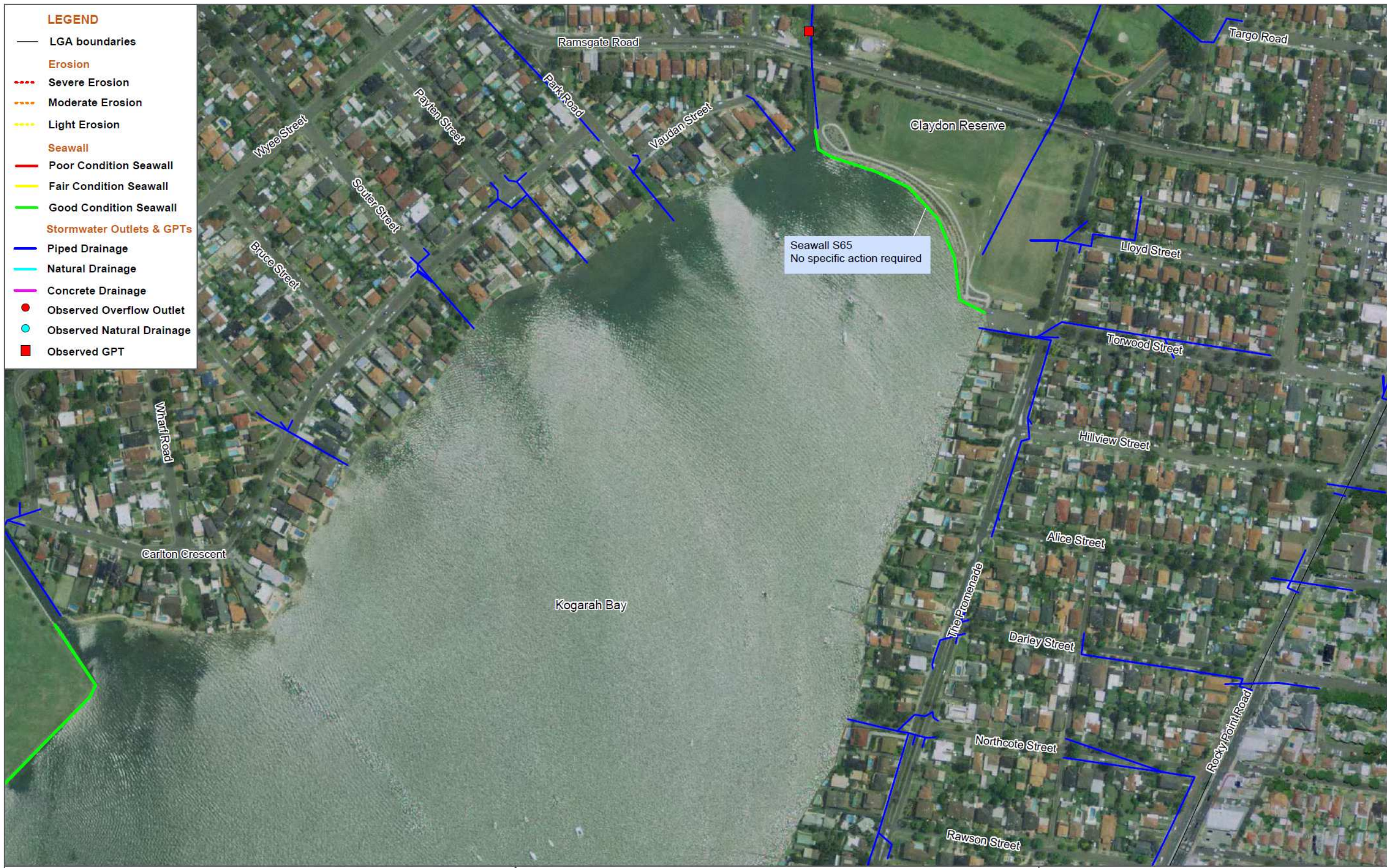
DATE	16/04/2010	0	75	150	COORDINATE SYSTEM
					GDA 94 Zone 56
PROJECT NO.	3001765	PROJECT TITLE	Georges River Data Compilation and Estuary Processes Study		

FIG NO.	35	FIGURE TITLE	North-West Woollooware Bay		
CREATED BY	M. GLATZ	LOCATION	I:\projects\3001765 - Georges River Estuary Process Study\009DATA\GIS\Mapinfo Workspaces		



DATE	16/04/2010	0	75	150	COORDINATE SYSTEM
metres				GDA 94 Zone 56	
PROJECT NO.	3001765	PROJECT TITLE	Georges River Data Compilation and Estuary Processes Study		

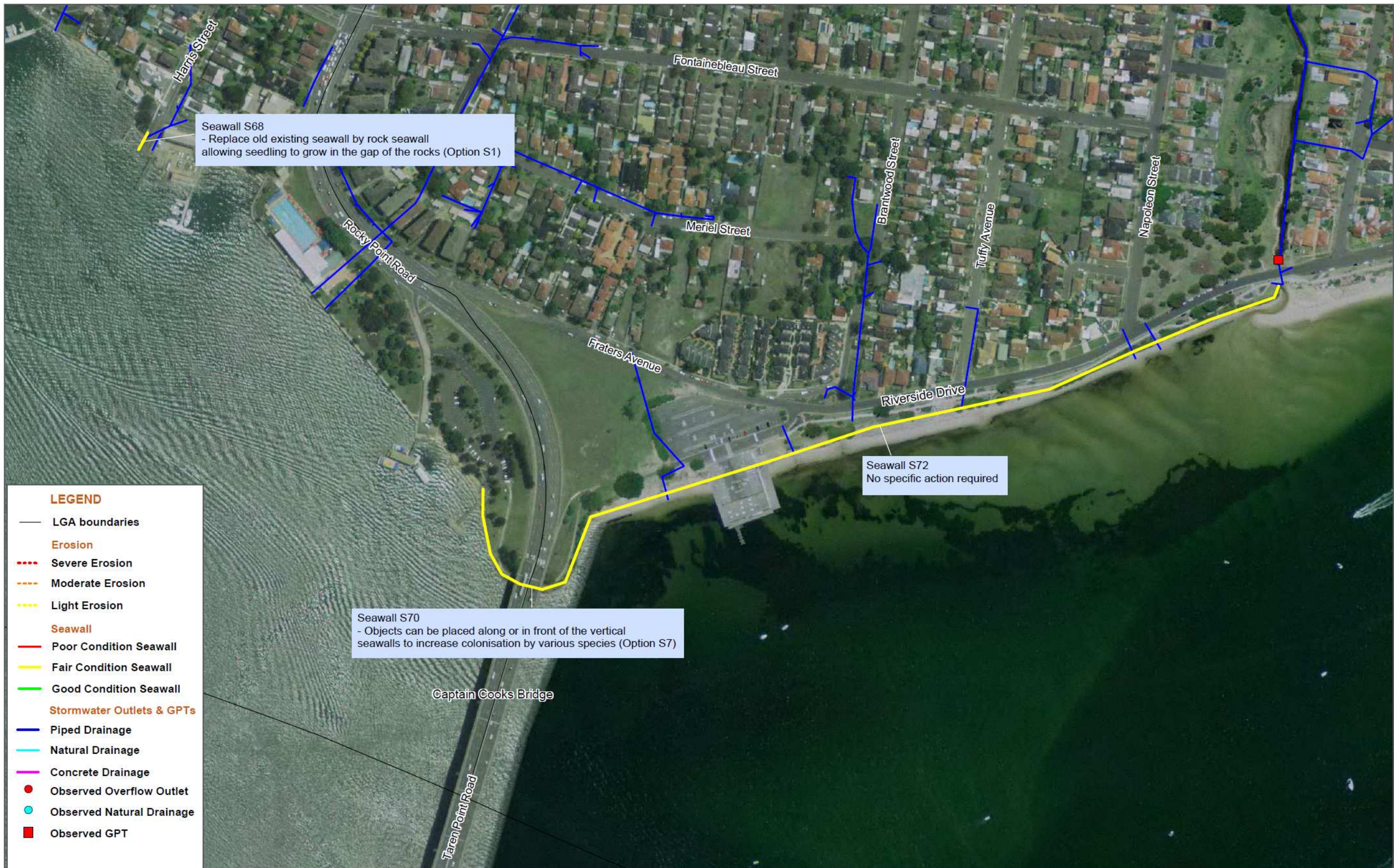
FIG NO.	36	FIGURE TITLE	South Kogarah Bay		
CREATED BY	M. GLATZ	LOCATION	I:\projects\3001765 - Georges River Estuary Process Study\009DATA\GIS\Mapinfo Workspaces		



DATE	16/04/2010	0	75	150	COORDINATE SYSTEM
metres					GDA 94 Zone 56
PROJECT NO.	3001765	PROJECT TITLE	Georges River Data Compilation and Estuary Processes Study		

FIG NO.	37	FIGURE TITLE	North Kogarah Bay		
CREATED BY	M. GLATZ	LOCATION	I:\projects\3001765 - Georges River Estuary Process Study\009DATA\GIS\Mapinfo Workspaces		

Logos for the local government (North Kogarah Council) and SMEC.



DATE 16/04/2010

0 75 150 metres

COORDINATE SYSTEM
GDA 94 Zone 56

PROJECT NO. 3001765

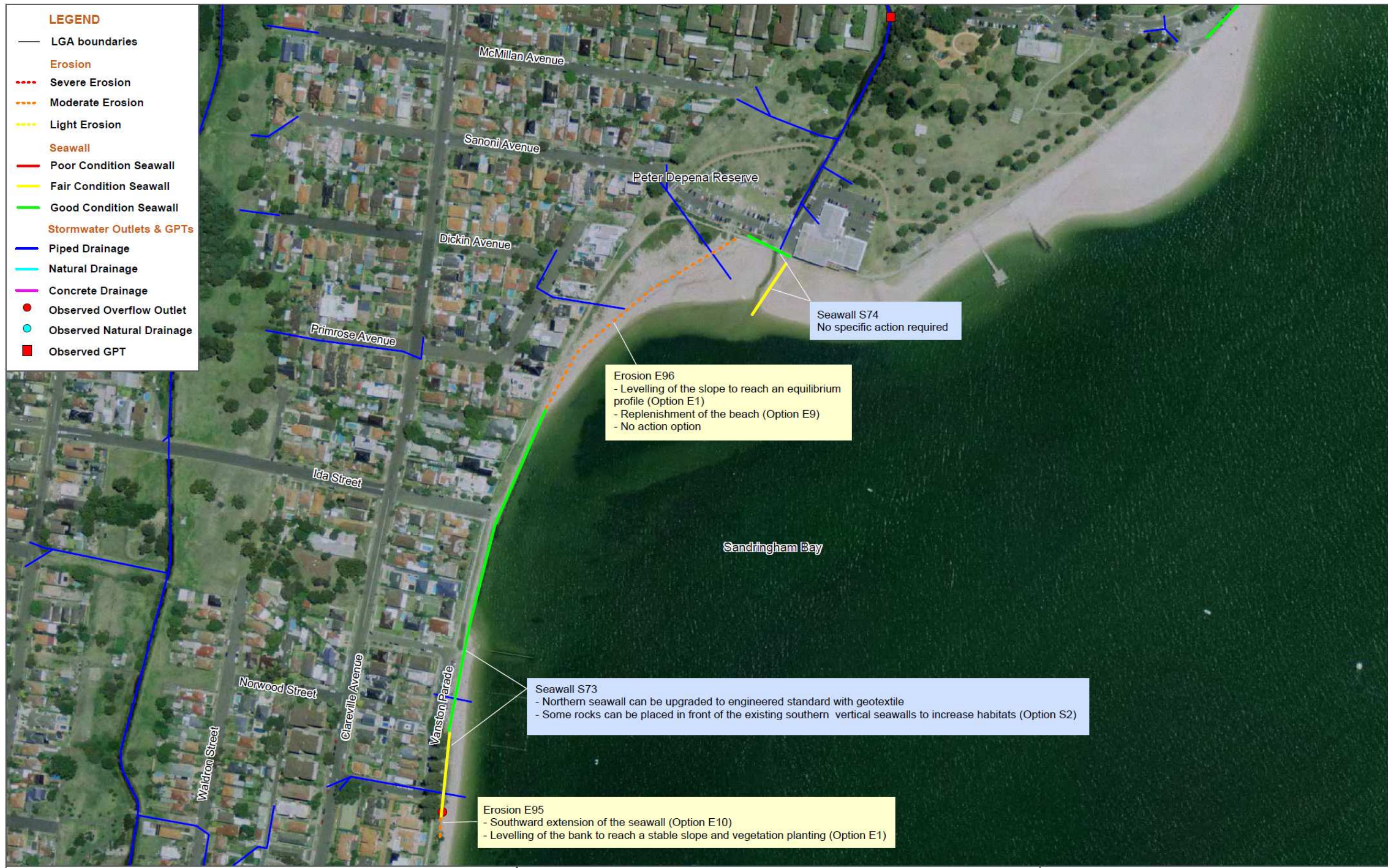
PROJECT TITLE
Georges River Data Compilation and Estuary Processes Study

FIG NO. 38

FIGURE TITLE
North Captain Cook Bridge

CREATED BY
M. GLATZ

LOCATION
I:\projects\3001765 - Georges River Estuary Process Study\009DATA\GIS\MapInfo Workspaces



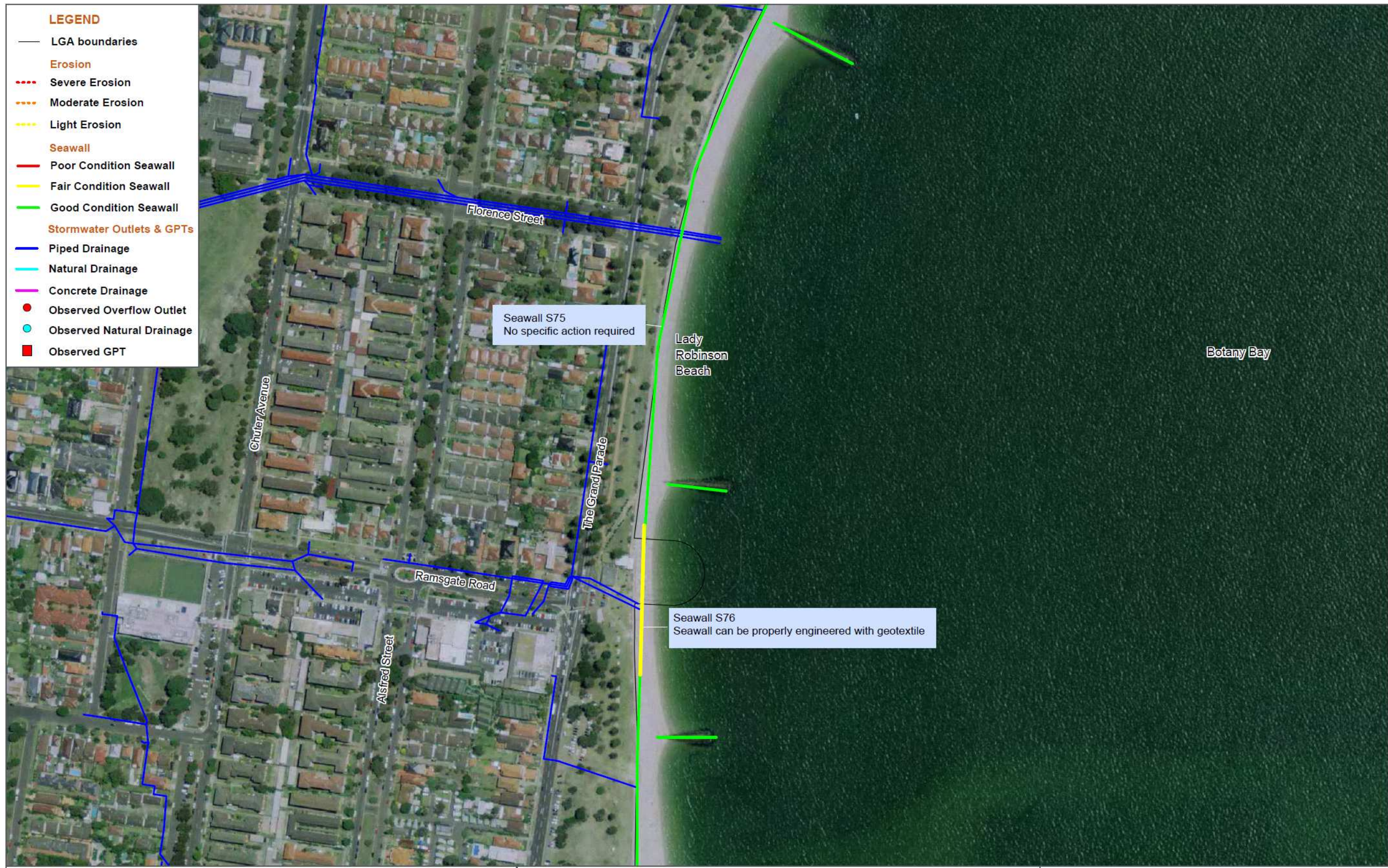
DATE	16/04/2010	0	75	150	COORDINATE SYSTEM
metres					GDA 94 Zone 56
PROJECT NO.	3001765	PROJECT TITLE	Georges River Data Compilation and Estuary Processes Study		

FIG NO.	39	FIGURE TITLE	Sandringham Bay		
CREATED BY	M. GLATZ	LOCATION	I:\projects\3001765 - Georges River Estuary Process Study\009DATA\GIS\Mapinfo Workspaces		



DATE	18/04/2010	0	75	150	COORDINATE SYSTEM	GDA 94 Zone 56
metres						
PROJECT NO.	3001765	PROJECT TITLE	Georges River Data Compilation and Estuary Processes Study			

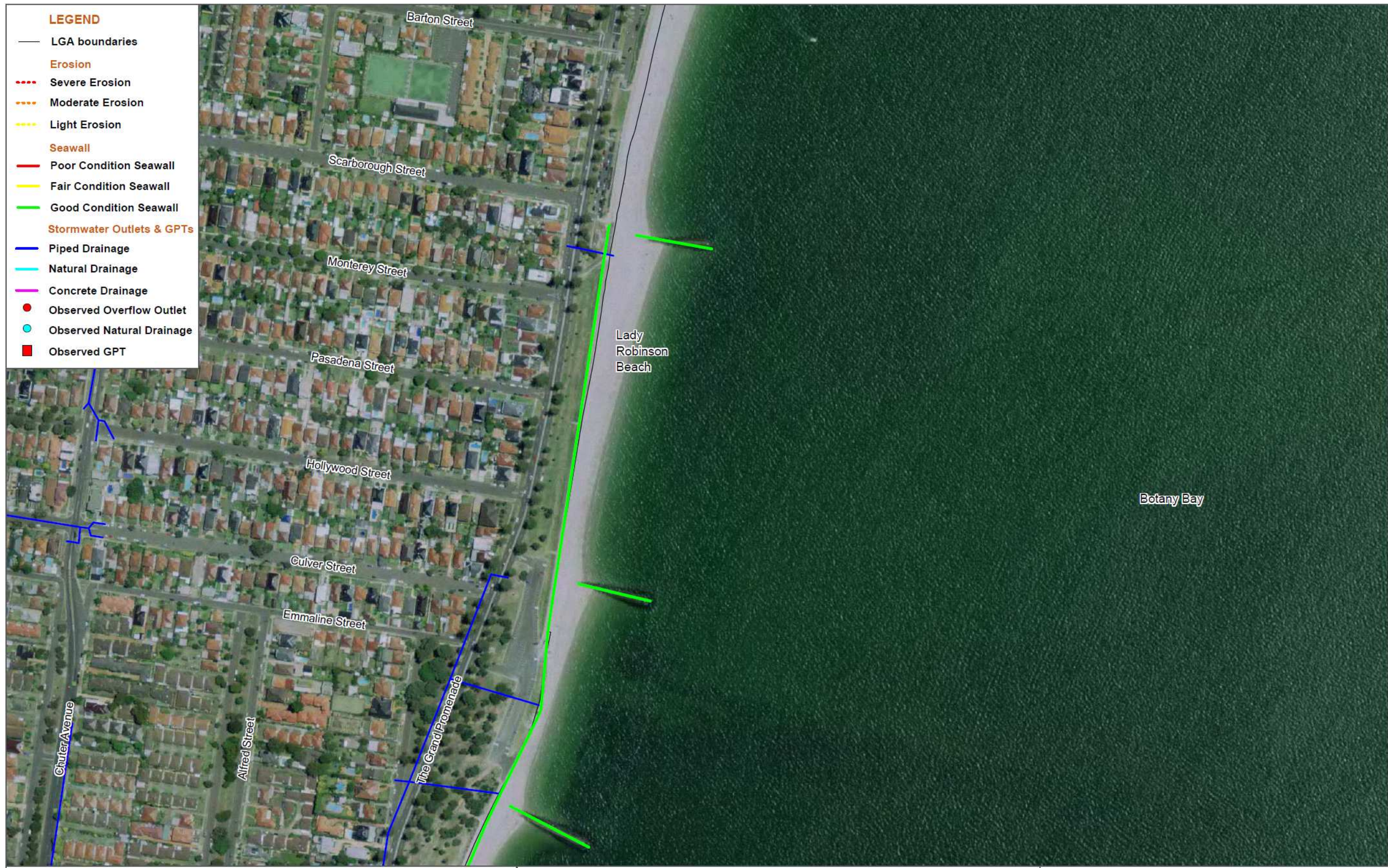
FIG. NO.	40	FIGURE TITLE	Southern End of Lady Robinson Beach (Groynes 1-3)			
CREATED BY	M. GLATZ	LOCATION	I:\projects\3001765 - Georges River Estuary Process Study\009DATA\GIS\Mapinfo Workspaces			



DATE	18/04/2010	0	75	150	COORDINATE SYSTEM
metres					GDA 94 Zone 56
PROJECT NO.	3001765	PROJECT TITLE	Georges River Data Compilation and Estuary Processes Study		

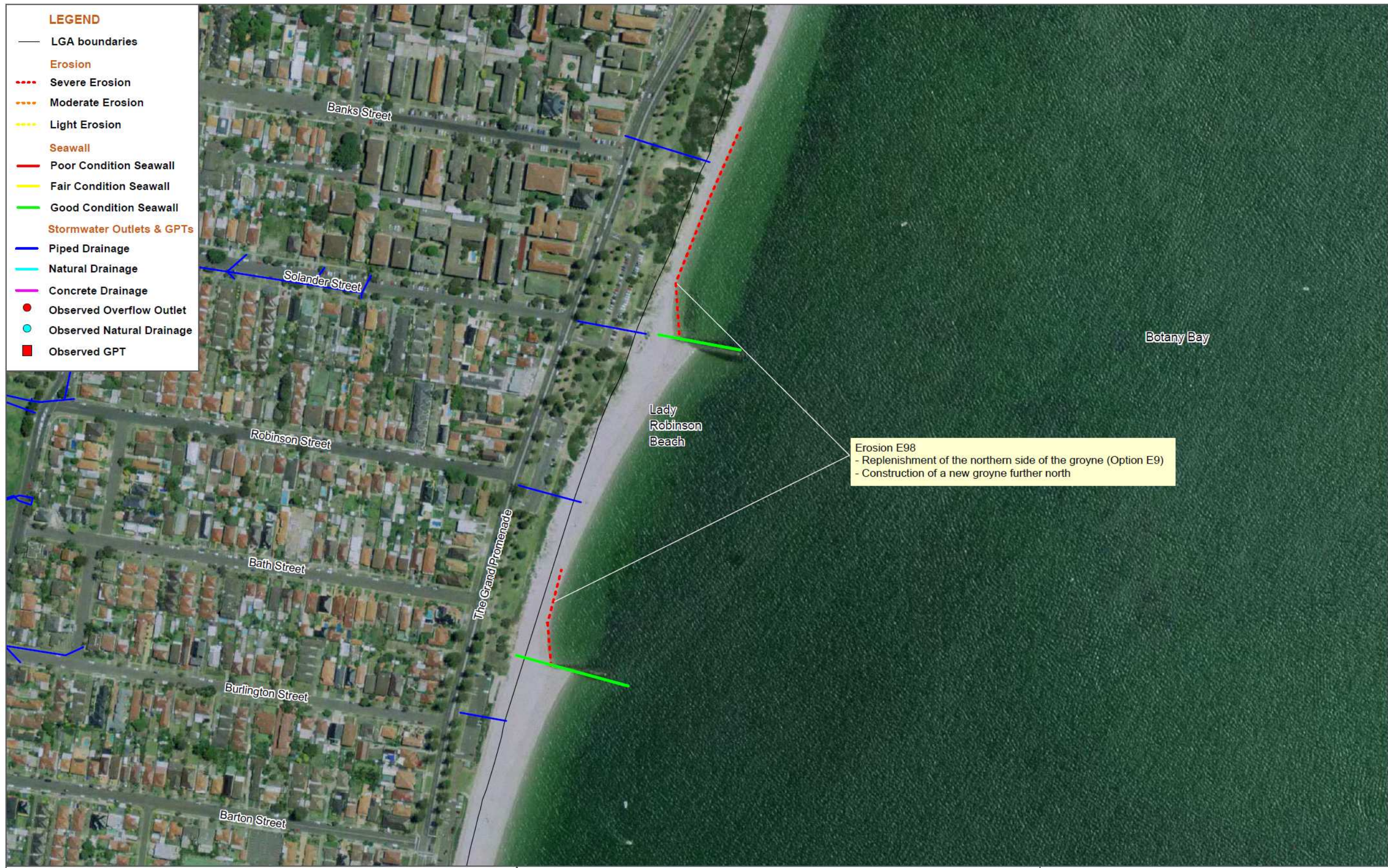
FIG NO.	41	FIGURE TITLE	South Lady Robinson Beach (Groynes 4-6)		
CREATED BY	M. GLATZ	LOCATION	I:\projects\3001765 - Georges River Estuary Process Study\009DATA\GIS\Mapinfo Workspaces		

Logo of the local government (left) and SMEC logo (right).



DATE	18/04/2010	0	75	150	COORDINATE SYSTEM
metres				GDA 94 Zone 56	
PROJECT NO.	3001765	PROJECT TITLE	Georges River Data Compilation and Estuary Processes Study		

FIG NO.	42	FIGURE TITLE	Middle Lady Robinson Beach (Groynes 7-9)		
CREATED BY	M. GLATZ	LOCATION	I:\projects\3001765 - Georges River Estuary Process Study\009DATA\GIS\Mapinfo Workspaces		



DATE 16/04/2010

0 75 150 metres

COORDINATE SYSTEM
GDA 94 Zone 56

PROJECT NO. 3001765

PROJECT TITLE
Georges River Data Compilation and Estuary Processes Study

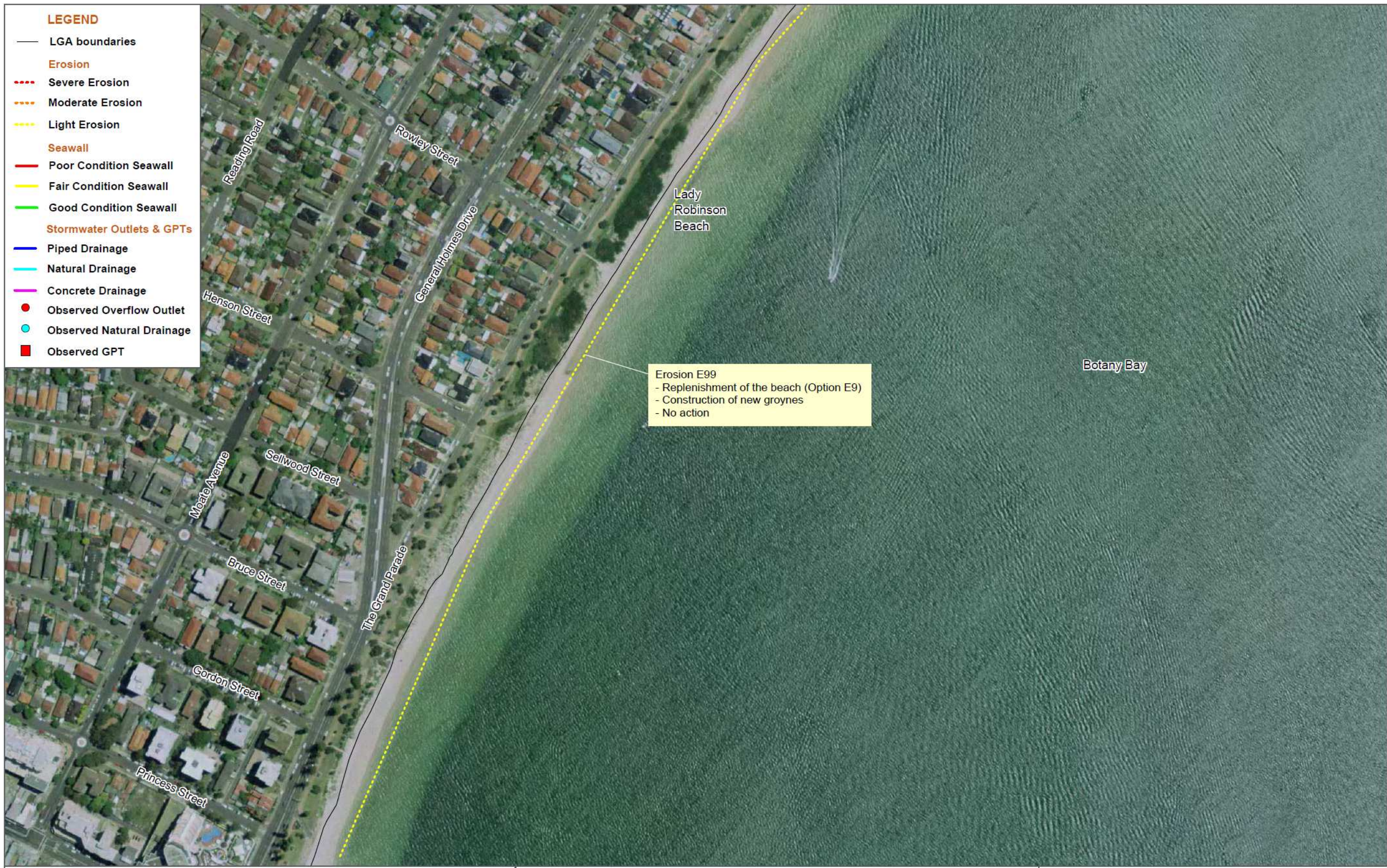
FIG NO. 43

FIGURE TITLE
Middle Lady Robinson Beach (Groynes 10-11)

CREATED BY
M. GLATZ

LOCATION
I:\projects\3001765 - Georges River Estuary Process Study\009DATA\GIS\Mapinfo Workspaces





DATE 16/04/2010

0 75 150
metres

COORDINATE SYSTEM
GDA 94 Zone 56

PROJECT NO. 3001765

PROJECT TITLE
Georges River Data Compilation
and Estuary Processes Study

FIG NO. 44

FIGURE TITLE
North Lady Robinson Beach

CREATED BY
M. GLATZ

LOCATION
I:\projects\3001765 - Georges River Estuary
Process Study\009DATA\GIS\Mapinfo
Workspaces





DATE 18/04/2010

0 75 150 metres

COORDINATE SYSTEM
GDA 94 Zone 56

PROJECT NO. 3001765

PROJECT TITLE
Georges River Data Compilation and Estuary Processes Study

FIG NO. 45

FIGURE TITLE
Northern End of Lady Robinson Beach

CREATED BY M. GLATZ

LOCATION
I:\projects\3001765 - Georges River Estuary Process Study\009DATA\GIS\MapInfo Workspaces

