






















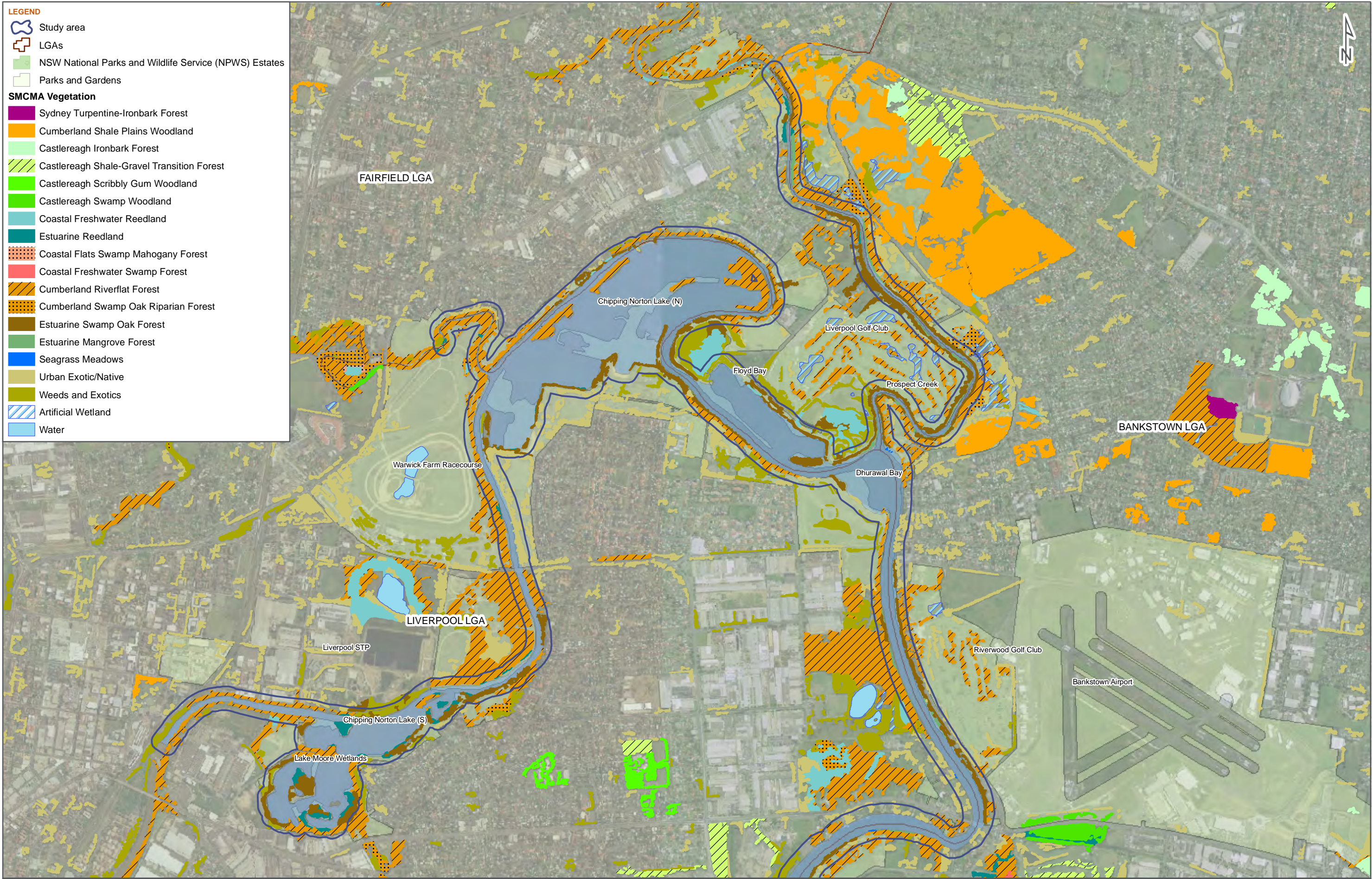




**LEGEND**

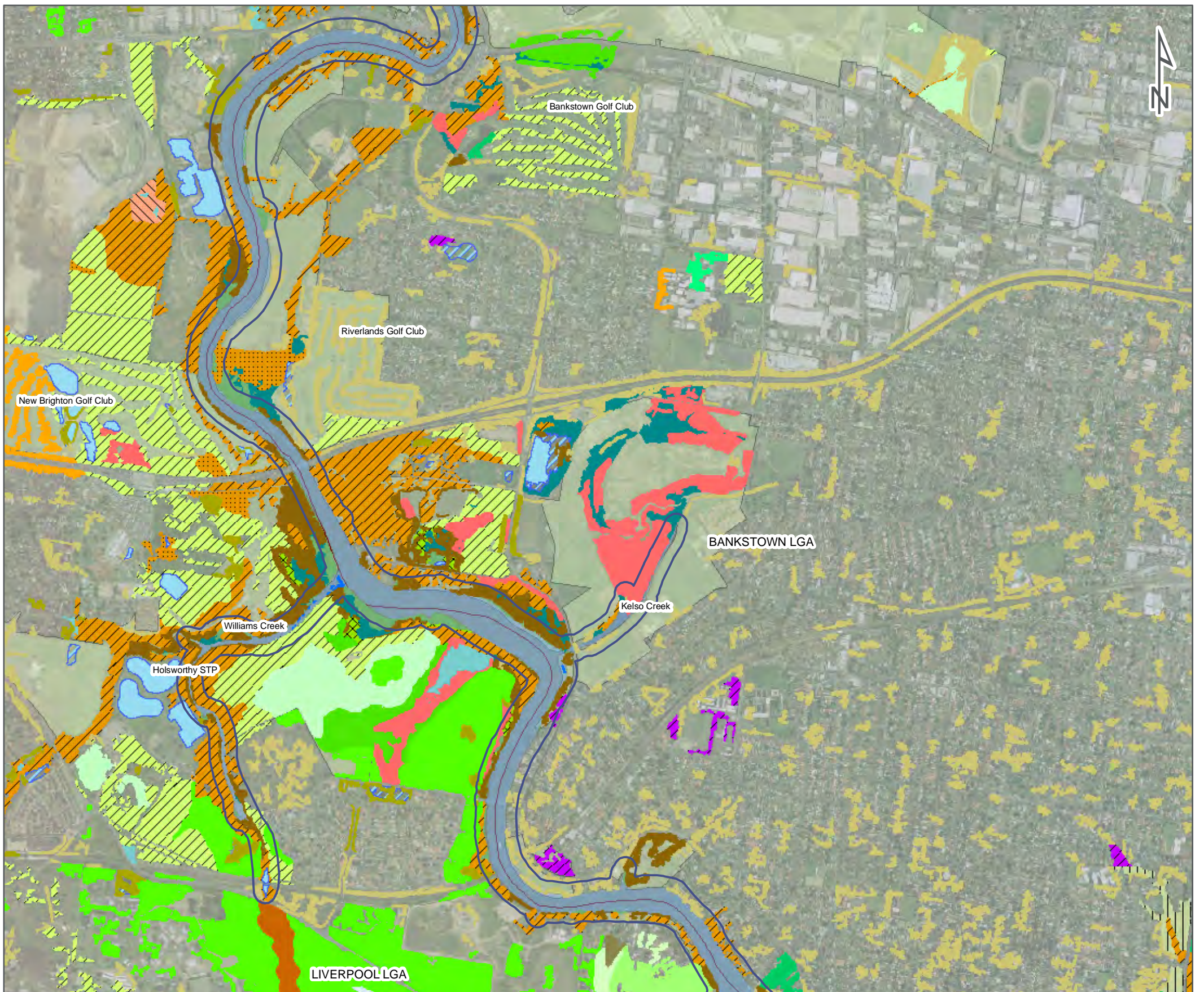
-  Study area
-  LGAs
-  NSW National Parks and Wildlife Service (NPWS) Estates
-  Parks and Gardens

**SMCMA Vegetation**

-  Sydney Turpentine-Ironbark Forest
-  Cumberland Shale Plains Woodland
-  Castlereagh Ironbark Forest
-  Castlereagh Shale-Gravel Transition Forest
-  Castlereagh Scribbly Gum Woodland
-  Castlereagh Swamp Woodland
-  Coastal Freshwater Reedland
-  Estuarine Reedland
-  Coastal Flats Swamp Mahogany Forest
-  Coastal Freshwater Swamp Forest
-  Cumberland Riverflat Forest
-  Cumberland Swamp Oak Riparian Forest
-  Estuarine Swamp Oak Forest
-  Estuarine Mangrove Forest
-  Seagrass Meadows
-  Urban Exotic/Native
-  Weeds and Exotics
-  Artificial Wetland
-  Water



<p><b>DATE</b> 13/04/2010</p>	<p><b>SCALE</b> 0 250 500 1,000 1:20,000 Meters</p>	<p><b>PAGE SIZE</b> A3</p>	<p><b>COORDINATE SYSTEM</b> MGA Z56</p>	<p><b>FIG NO.</b> 8.6a</p>	<p><b>FIGURE TITLE</b> Riparian Vegetation Communities</p>	 <p>© SMEC Australia Pty Ltd 2010. All Rights Reserved.</p>
<p><b>PROJECT NO.</b> 3001765</p>	<p><b>PROJECT TITLE</b> Georges River Estuary Process Study</p>		<p><b>CREATED BY</b> E. Kirchner</p>	<p><b>LOCATION</b> I:\Projects\3001765 - Georges River Estuary Process Study\009 DATA\GIS\ArcView Files\Working files</p>		<p><small>Data Source - Vegetation: The Native Vegetation of the Sydney Metropolitan Catchment Management Authority Area (Draft) (2009). NSW Department of Environment, Climate Change and Water, Hurstville, NSW Australia.</small></p> 



**LEGEND**

	Study area		Hinterland Sandstone Dwarf Apple Heath-Woodland
	LGAs		Coastal Upland Damp Heath Swamp
	NSW National Parks and Wildlife Service (NPWS) Estates		Coastal Freshwater Reedland
	Parks and Gardens		Estuarine Reedland
<b>SMCMA Vegetation</b>			
	Coastal Enriched Sandstone Moist Forest		Coastal Flats Swamp Mahogany Forest
	Coastal Shale-Sandstone Forest		Coastal Freshwater Swamp Forest
	Cumberland Shale Plains Woodland		Coastal Sand Swamp Mahogany Forest
	Cumberland Shale-Sandstone Ironbark Forest		Hinterland Riverflat Paperbark Swamp Forest
	Castlereagh Ironbark Forest		Cumberland Riverflat Forest
	Castlereagh Shale-Gravel Transition Forest		Cumberland Swamp Oak Riparian Forest
	Coastal Enriched Sandstone Sheltered Forest		Estuarine Swamp Oak Forest
	Coastal Sandstone Riparian Forest		Hinterland Flats Eucalypt Forest
	Hornsby Enriched Sandstone Exposed Woodland		Estuarine Mangrove Forest
	Southern Sydney Sheltered Forest		Estuarine Saltmarsh
	Woronora Sandstone Exposed Bloodwood Woodland		Seagrass Meadows
	Hinterland Sandstone Gully Blackbutt-Apple Forest		Urban Exotic/Native
	Hinterland Sandstone Transition Grey Gum Forest		Weeds and Exotics
	Castlereagh Scribbly Gum Woodland		Artificial Wetland
	Castlereagh Swamp Woodland		Water

DATE 13/04/2010 SCALE 1:20,000 PAGE SIZE A3 COORDINATE SYSTEM MGA Z56

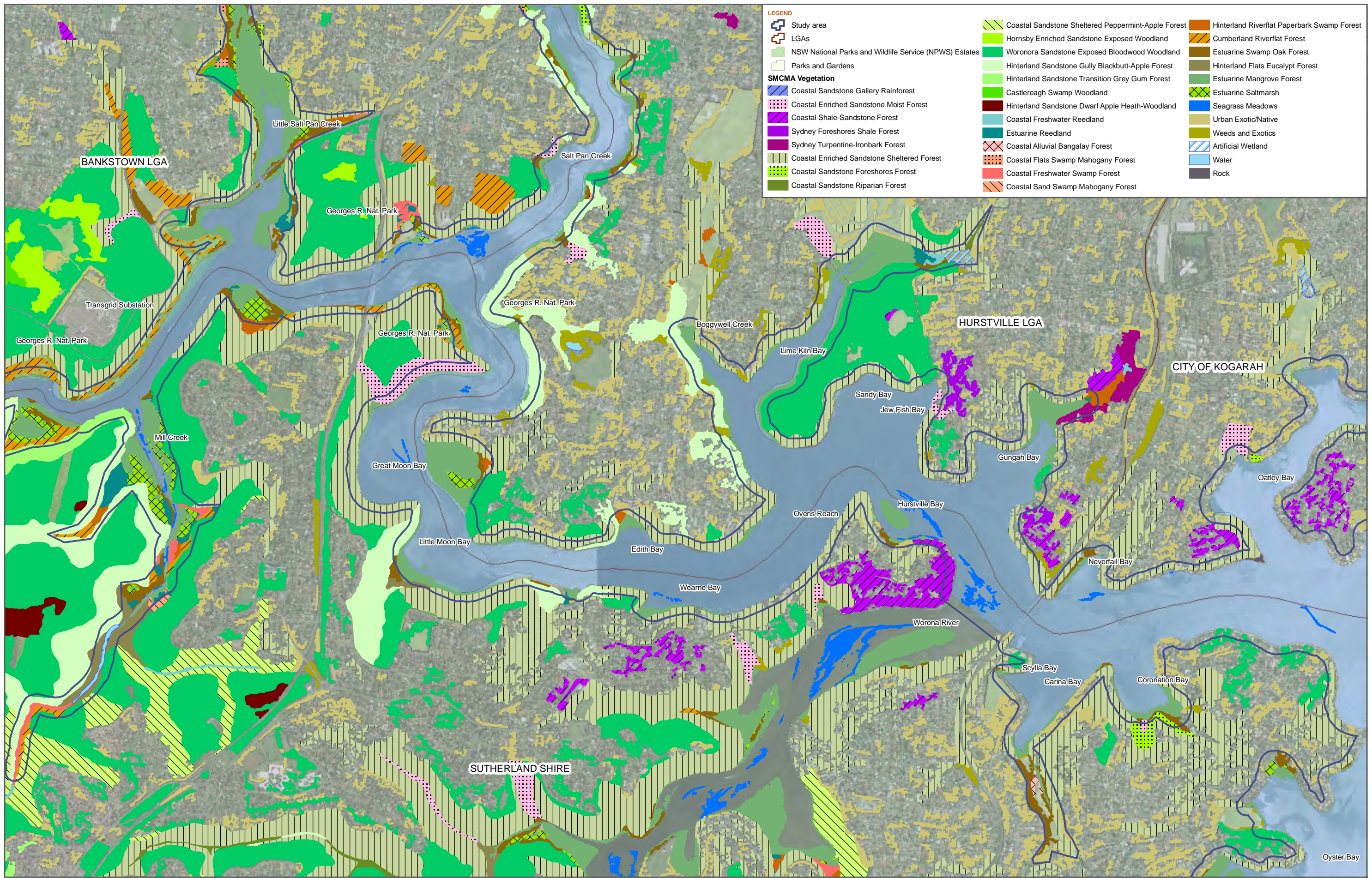
PROJECT NO. 3001765 PROJECT TITLE Georges River Estuary Process Study

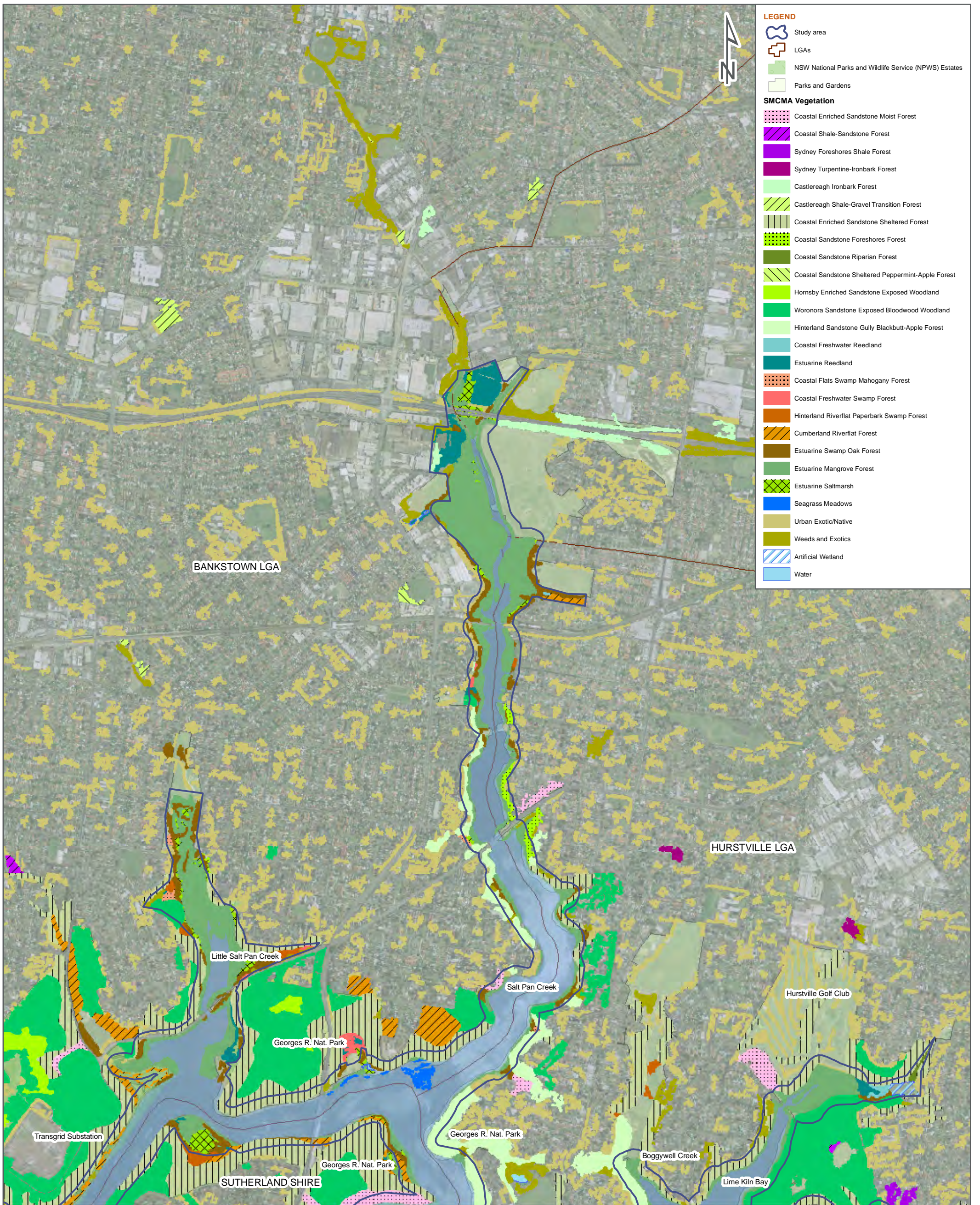
FIG NO. 8.6b FIGURE TITLE Riparian Vegetation Communities

CREATED BY E. Kirchner LOCATION I:\Projects\3001765 - Georges River Estuary Process Study\009 DATA\GIS\ArcView Files\Working files

© SMEC Australia Pty Ltd 2010. All Rights Reserved.

Data Source - Vegetation: The Native Vegetation of the Sydney Metropolitan Catchment Management Authority Area (Draft) (2009). NSW Department of Environment, Climate Change and Water. Hurstville, NSW Australia.





DATE 13/04/2010 SCALE 1:20,000 0 375 750 1,500 Meters PAGE SIZE A3 COORDINATE SYSTEM MGA Z56

PROJECT NO. 3001765 PROJECT TITLE Georges River Estuary Process Study

FIG NO. 8.6d FIGURE TITLE Riparian Vegetation Communities

CREATED BY E. Kirchner LOCATION I:\Projects\3001765 - Georges River Estuary Process Study\900Data\GIS\ArcView Files\working files



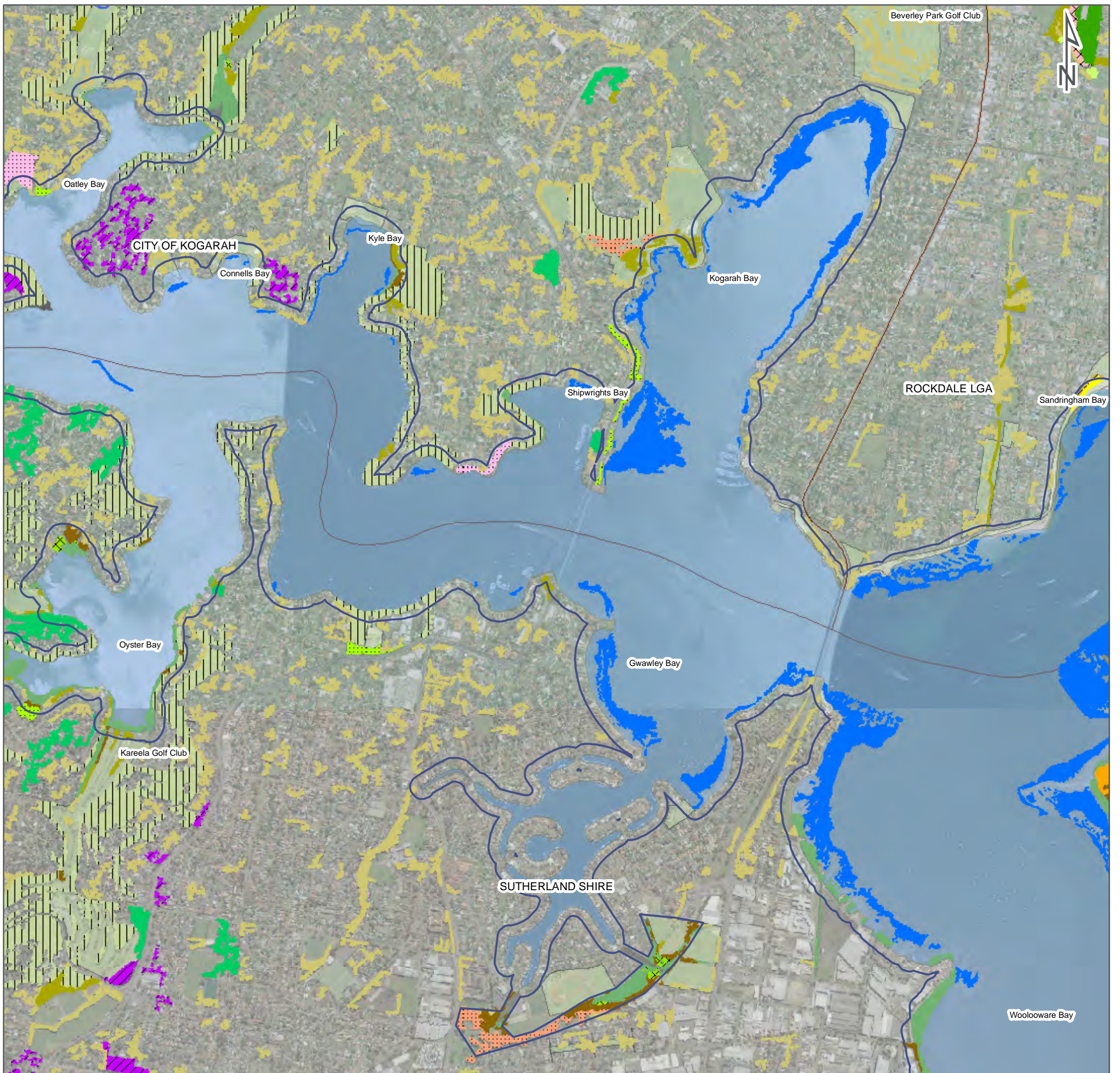
**SMEC**

© SMEC Australia Pty Ltd 2010. All Rights Reserved.



**GRU**

Data Source - Vegetation: The Native Vegetation of the Sydney Metropolitan Catchment Management Authority Area (Draft) (2009), NSW Department of Environment, Climate Change and Water, Hurstville, NSW Australia.



**LEGEND**

	Study area		Woronora Sandstone Exposed Bloodwood Woodland
	LGAs		Coastal Sand Bangalay Forest
	NSW National Parks and Wildlife Service (NPWS) Estates		Coastal Foredune Wattle Scrub
	Parks and Gardens		Coastal Alluvial Bangalay Forest
<b>SMCMA Vegetation</b>			Coastal Flats Swamp Mahogany Forest
	Coastal Enriched Sandstone Moist Forest		Estuarine Swamp Oak Forest
	Coastal Shale-Sandstone Forest		Estuarine Mangrove Forest
	Sydney Turpentine-Ironbark Forest		Estuarine Saltmarsh
	Cumberland Shale Plains Woodland		Seagrass Meadows
	Beach Spinifex Grassland		Urban Exotic/Native
	Castlereagh Shale-Gravel Transition Forest		Weeds and Exotics
	Coastal Sand Apple-Bloodwood Forest		Artificial Wetland
	Coastal Enriched Sandstone Sheltered Forest		Rock
	Coastal Sandstone Foreshores Forest		

DATE 13/04/2010 SCALE 1:20,000 PAGE SIZE A3 COORDINATE SYSTEM MGA Z56

PROJECT NO. 3001765 PROJECT TITLE Georges River Estuary Process Study

FIG NO. 8.6e FIGURE TITLE Riparian Vegetation Communities

CREATED BY E. Kirchner LOCATION I:\Projects\3001765 - Georges River Estuary Process Study\900Data\GIS\ArcView Files\working files




© SMEC Australia Pty Ltd 2010. All Rights Reserved.

Data Source - Vegetation: The Native Vegetation of the Sydney Metropolitan Catchment Management Authority Area (Draft) (2009), NSW Department of Environment, Climate Change and Water, Hurstville, NSW Australia.



**LEGEND**

Study area	Coastal Sand Bangalay Forest	Estuarine Swamp Oak Forest
LGAs	Coastal Tea-tree-Banksia Scrub	Estuarine Mangrove Forest
NSW National Parks and Wildlife Service (NPWS) Estates	Coastal Foredune Wattle Scrub	Estuarine Saltmarsh
Parks and Gardens	Coastal Upland Wet Heath Swamp	Seagrass Meadows
<b>SMCMA Vegetation</b>	Coastal Sand Swamp Sedgeland	Urban Exotic/Native
Coastal Sand Littoral Forest	Estuarine Reedland	Weeds and Exotics
Beach Spinifex Grassland	Coastal Alluvial Bangalay Forest	Artificial Wetland
Castlereagh Shale-Gravel Transition Forest	Coastal Flats Swamp Mahogany Forest	Water
Coastal Sand Apple-Bloodwood Forest	Coastal Freshwater Swamp Forest	
Coastal Enriched Sandstone Sheltered Forest	Hinterland Riverflat Paperbark Swamp Forest	

DATE 13/04/2010 SCALE 1:20,000 PAGE SIZE A3 COORDINATE SYSTEM MGA Z56

PROJECT NO. 3001765 PROJECT TITLE Georges River Estuary Process Study

FIG NO. 8.6f FIGURE TITLE Riparian Vegetation Communities

CREATED BY E. Kirchner LOCATION I:\Projects\3001765 - Georges River Estuary Process Study\900Data\GIS\ArcView Files\working files



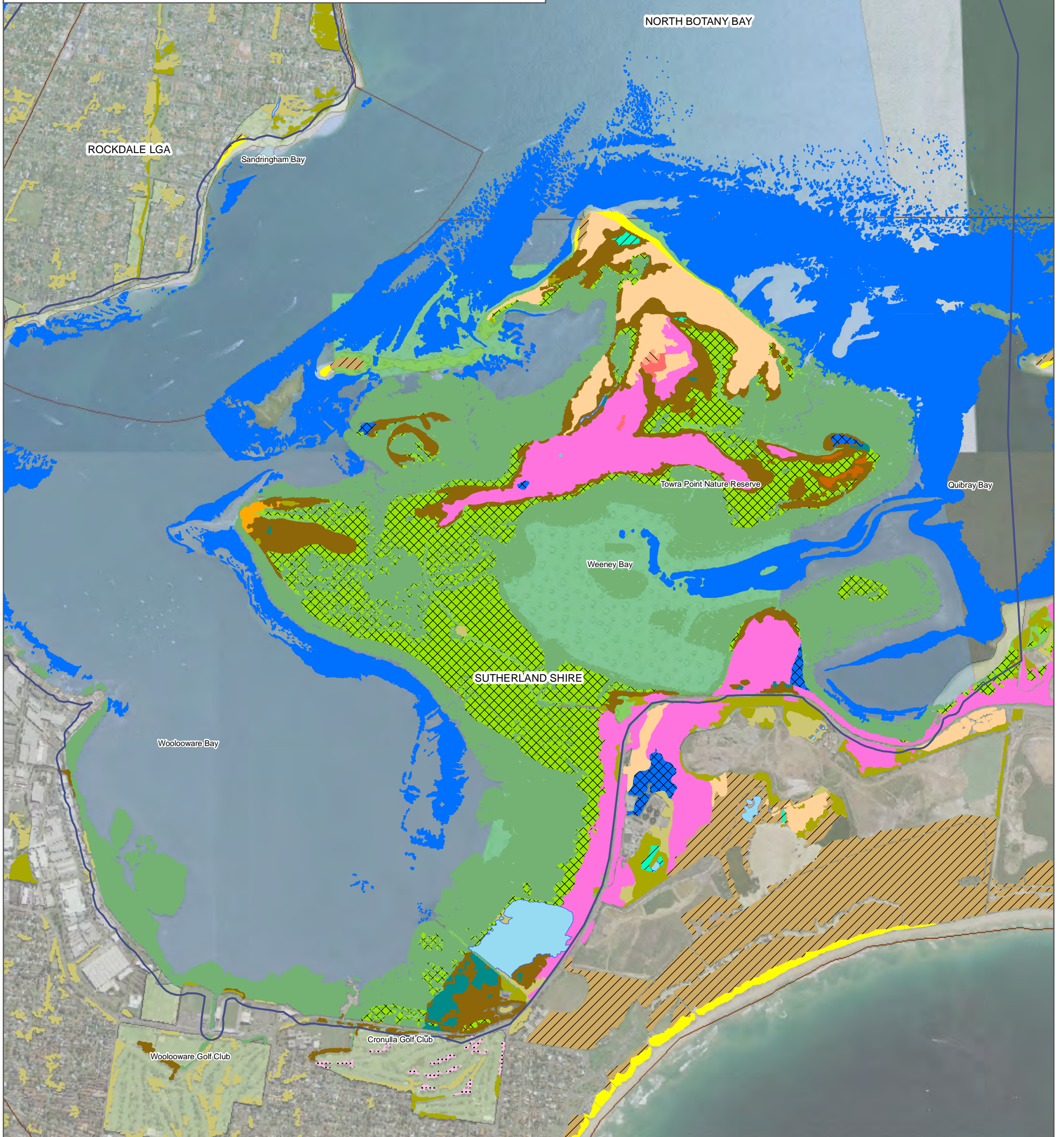
© SMEC Australia Pty Ltd 2010. All Rights Reserved.



Data Source - Vegetation: The Native Vegetation of the Sydney Metropolitan Catchment Management Authority Area (Draft) (2009), NSW Department of Environment, Climate Change and Water, Hurstville, NSW Australia.

**LEGEND**

Study area	Coastal Sand Apple-Bloodwood Forest	Hinterland Riverflat Paperbark Swamp Forest
LGAs	Coastal Sand Bangalay Forest	Estuarine Swamp Oak Forest
NSW National Parks and Wildlife Service (NPWS) Estates	Coastal Tea-tree-Banksia Scrub	Estuarine Mangrove Forest
Parks and Gardens	Coastal Fore-dune Wattle Scrub	Estuarine Saltmarsh
<b>SMCMA Vegetation</b>	Coastal Upland Wet Heath Swamp	Seagrass Meadows
Coastal Dune Littoral Rainforest	Coastal Freshwater Reedland	Urban Exotic/Native
Coastal Enriched Sandstone Moist Forest	Estuarine Reedland	Weeds and Exotics
Coastal Sand Littoral Forest	Coastal Alluvial Bangalay Forest	Artificial Wetland
Cumberland Shale Plains Woodland	Coastal Freshwater Swamp Forest	Water
Beach Spinifex Grassland	Coastal Sand Swamp Mahogany Forest	



DATE 13/04/2010 SCALE 1:20,000

PAGE SIZE A3 COORDINATE SYSTEM MGA Z56

PROJECT NO. 3001765 PROJECT TITLE Georges River Estuary Process Study







FIG NO. 8.6g FIGURE TITLE Riparian Vegetation Communities

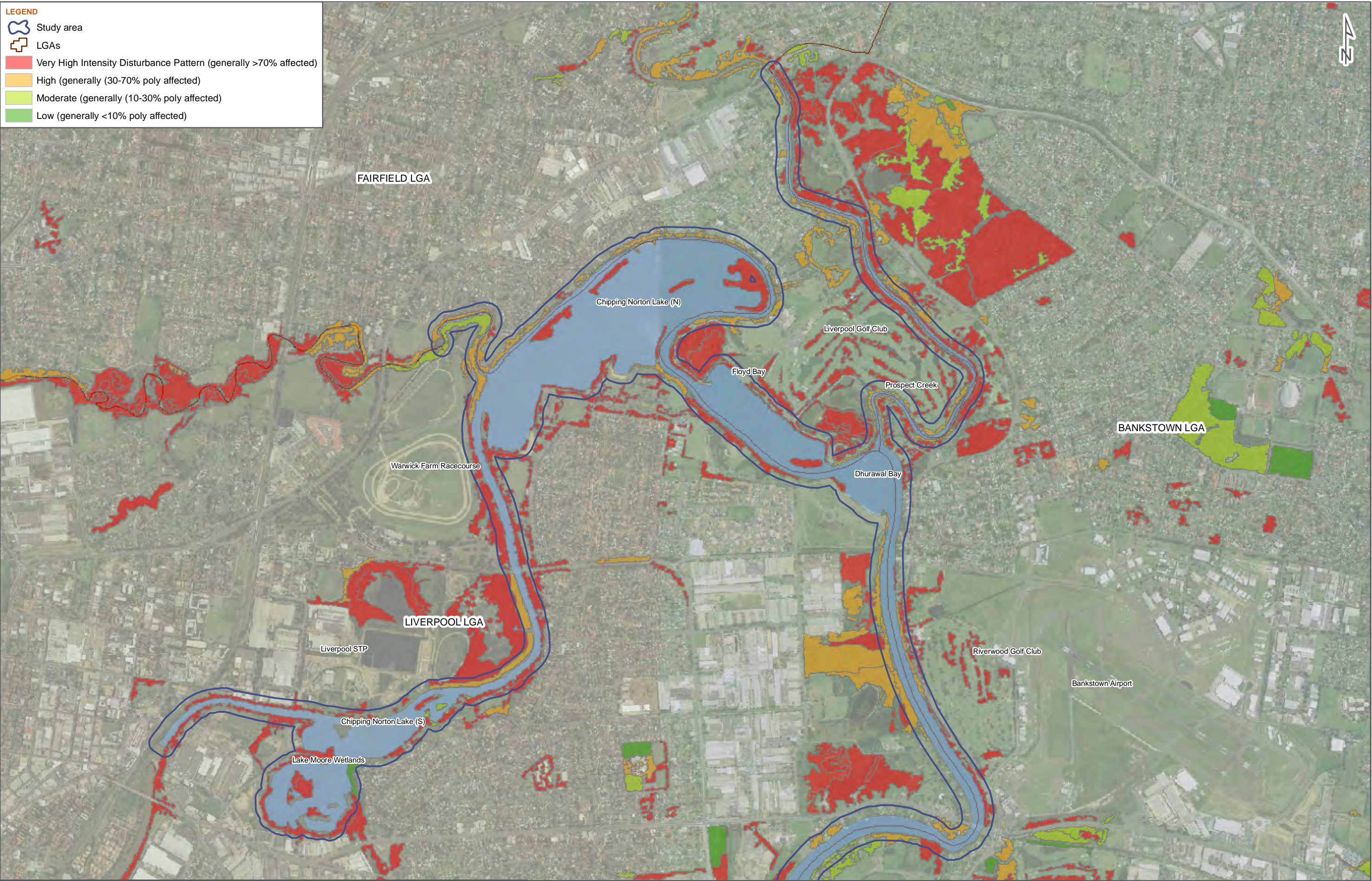
CREATED BY E. Kirchner LOCATION I:\Projects\3001765 - Georges River Estuary Process Study\900Data\GIS\ArcView Files\working files

© SMEC Australia Pty Ltd 2010. All Rights Reserved.

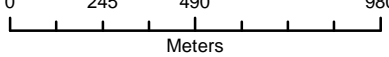
Data Source - Vegetation: The Native Vegetation of the Sydney Metropolitan Catchment Management Authority Area (Draft) (2009), NSW Department of Environment, Climate Change and Water, Hurstville, NSW Australia.

**LEGEND**

-  Study area
-  LGAs
-  Very High Intensity Disturbance Pattern (generally >70% affected)
-  High (generally (30-70% poly affected)
-  Moderate (generally (10-30% poly affected)
-  Low (generally <10% poly affected)



DATE 13/04/2010 SCALE 1:20,000



PAGE SIZE A3 COORDINATE SYSTEM MGA Z56

FIG NO. 8.7a

FIGURE TITLE Disturbance Mapping

PROJECT NO. 3001765 PROJECT TITLE Georges River Estuary Process Study

CREATED BY E. Kirchner

LOCATION I:\Projects\3001765 - Georges River Estuary Process Study\009 DATA\GIS\ArcView Files\Working files

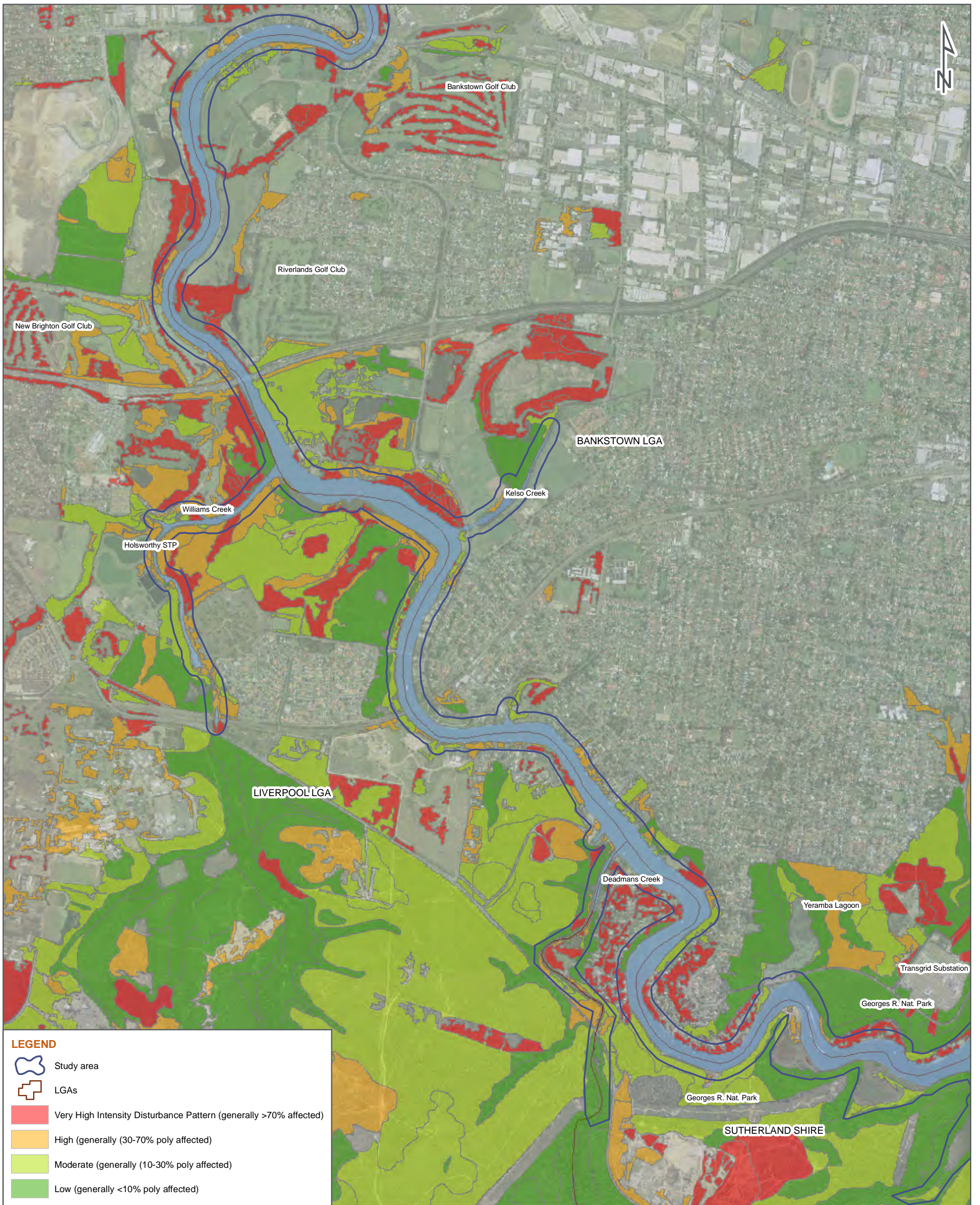


**SMEC** © SMEC Australia Pty Ltd 2010. All Rights Reserved.





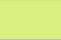

Data Source - Disturbance: The Native Vegetation of the Sydney Metropolitan Catchment Management Authority Area (Draft) (2009). NSW Department of Environment, Climate Change and Water, Hurstville, NSW Australia.

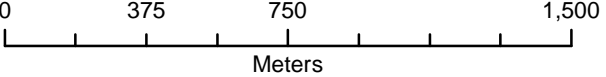






**LEGEND**

-  Study area
-  LGAs
-  Very High Intensity Disturbance Pattern (generally >70% affected)
-  High (generally 30-70% poly affected)
-  Moderate (generally 10-30% poly affected)
-  Low (generally <10% poly affected)

DATE 13/04/2010 SCALE 1:20,000  PAGE SIZE A3 COORDINATE SYSTEM MGA Z56

PROJECT NO. 3001765 PROJECT TITLE Georges River Estuary Process Study

FIG NO. 8.7b FIGURE TITLE Disturbance Mapping

CREATED BY E. Kirchner LOCATION I:\Projects\3001765 - Georges River Estuary Process Study\009 DATA\GIS\ArcView Files\Working files




© SMEC Australia Pty Ltd 2010. All Rights Reserved.

Data Source - Disturbance: The Native Vegetation of the Sydney Metropolitan Catchment Management Authority Area (Draft) (2009), NSW Department of Environment, Climate Change and Water, Hurstville, NSW Australia.