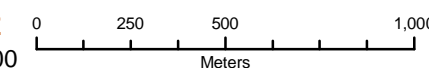

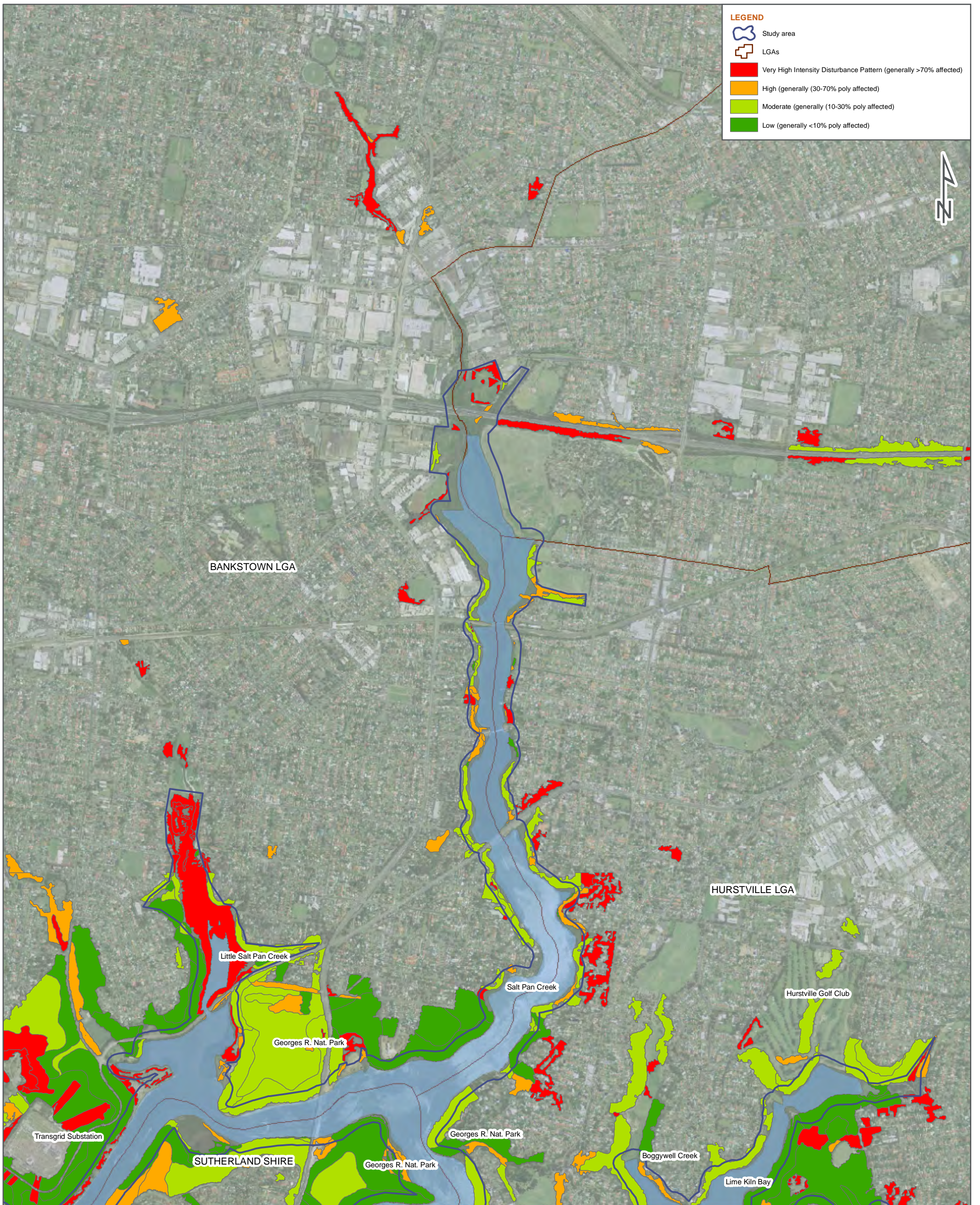








<p>DATE 13/04/2010</p>	<p>SCALE 1:20,000</p> 	<p>PAGE SIZE A3</p>	<p>COORDINATE SYSTEM MGA Z56</p>	<p>FIG NO. 8.7c</p>	<p>FIGURE TITLE Disturbance Mapping</p>	 <p>© SMEC Australia Pty Ltd 2010. All Rights Reserved.</p> 
<p>PROJECT NO. 3001765</p>	<p>PROJECT TITLE Georges River Estuary Process Study</p>	<p>CREATED BY E. Kirchner</p>	<p>LOCATION I:\Projects\3001765 - Georges River Estuary Process Study\900Data\GIS\ArcView Files\working files</p>	<p>Data Source - Disturbance: The Native Vegetation of the Sydney Metropolitan Catchment Management Authority Area (Draft) (2009). NSW Department of Environment, Climate Change and Water, Hurstville, NSW Australia.</p>		





**LEGEND**

-  Study area
-  LGAs
-  Very High Intensity Disturbance Pattern (generally >70% affected)
-  High (generally 30-70% poly affected)
-  Moderate (generally 10-30% poly affected)
-  Low (generally <10% poly affected)

DATE 13/04/2010 SCALE 1:20,000

PAGE SIZE A3 COORDINATE SYSTEM MGA Z56

PROJECT NO. 3001765 PROJECT TITLE Georges River Estuary Process Study

FIG NO. 8.7d FIGURE TITLE Disturbance Mapping

CREATED BY E. Kirchner LOCATION I:\Projects\3001765 - Georges River Estuary Process Study\900Data\GIS\ArcView Files\working files



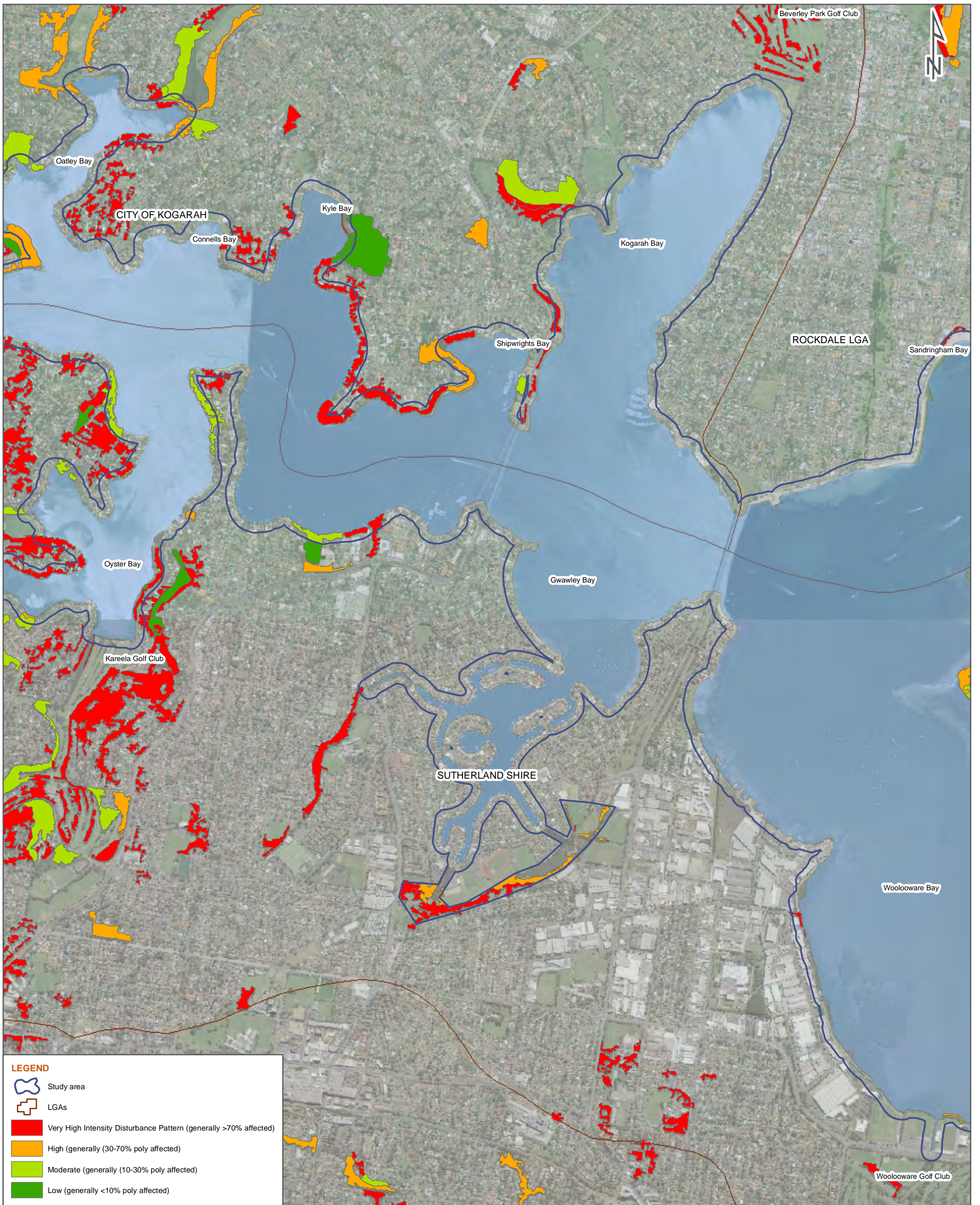
**SMEC**

© SMEC Australia Pty Ltd 2010. All Rights Reserved









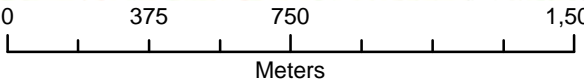
Data Source - Disturbance: The Native Vegetation of the Sydney Metropolitan Catchment Management Authority Area (Draft) (2009). NSW Department of Environment, Climate Change and Water. Hurstville, NSW Australia.





**LEGEND**

-  Study area
-  LGAs
-  Very High Intensity Disturbance Pattern (generally >70% affected)
-  High (generally 30-70% poly affected)
-  Moderate (generally 10-30% poly affected)
-  Low (generally <10% poly affected)

DATE 13/04/2010 SCALE 1:20,000  PAGE SIZE A3 COORDINATE SYSTEM MGA Z56

PROJECT NO. 3001765 PROJECT TITLE Georges River Estuary Process Study

FIG NO. 8.7e FIGURE TITLE Disturbance Mapping

CREATED BY E. Kirchner LOCATION I:\Projects\3001765 - Georges River Estuary Process Study\900Data\GIS\ArcView Files\working files

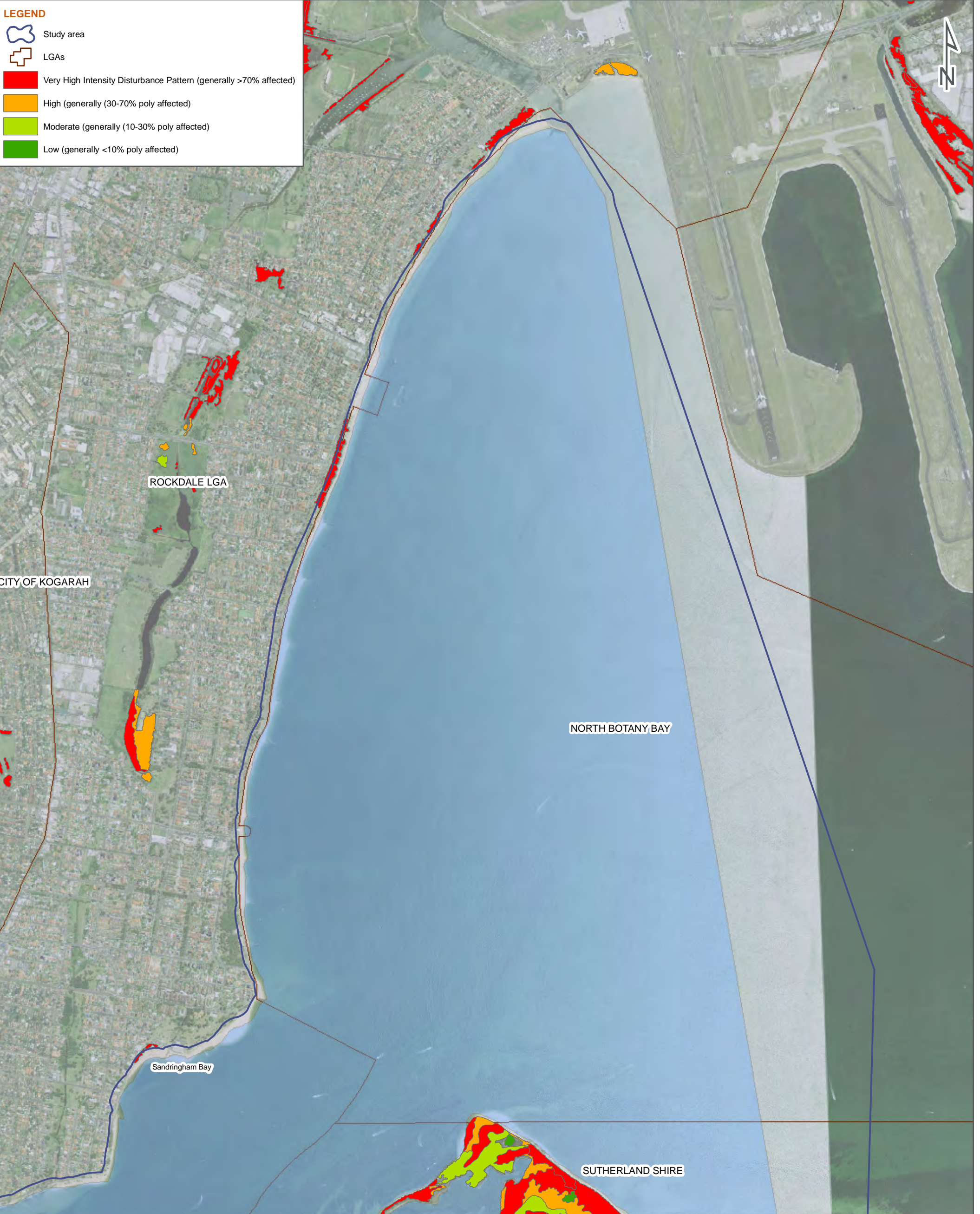


© SMEC Australia Pty Ltd 2010. All Rights Reserved.









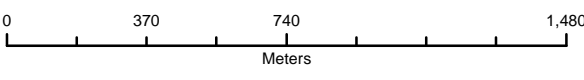
Data Source - Disturbance: The Native Vegetation of the Sydney Metropolitan Catchment Management Authority Area (Draft) (2009), NSW Department of Environment, Climate Change and Water, Hurstville, NSW Australia.





**LEGEND**

-  Study area
-  LGAs
-  Very High Intensity Disturbance Pattern (generally >70% affected)
-  High (generally 30-70% poly affected)
-  Moderate (generally 10-30% poly affected)
-  Low (generally <10% poly affected)

DATE 13/04/2010 SCALE 1:20,000  PAGE SIZE A3 COORDINATE SYSTEM MGA Z56

PROJECT NO. 3001765 PROJECT TITLE Georges River Estuary Process Study

FIG NO. 8.7f FIGURE TITLE Disturbance Mapping

CREATED BY E. Kirchner LOCATION I:\Projects\3001765 - Georges River Estuary Process Study\900Data\GIS\ArcView Files\working files

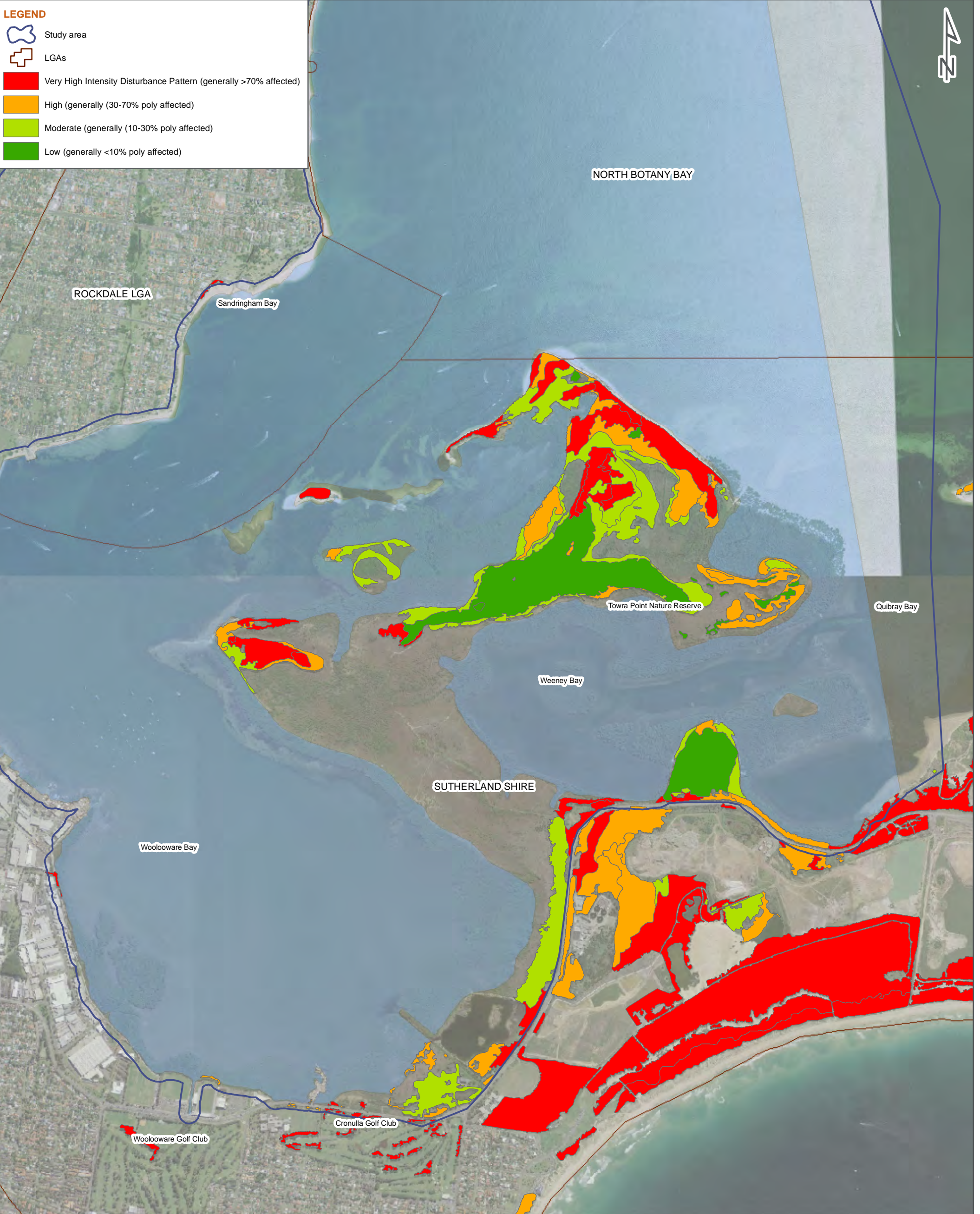


© SMEC Australia Pty Ltd 2010. All Rights Reserved.



Data Source - Disturbance: The Native Vegetation of the Sydney Metropolitan Catchment Management Authority Area (Draft) (2009), NSW Department of Environment, Climate Change and Water, Hurstville, NSW Australia.





DATE 13/04/2010 SCALE 1:20,000 0    375    750    1,500 PAGE SIZE A3 COORDINATE SYSTEM MGA Z56

PROJECT NO. 3001765 PROJECT TITLE Georges River Estuary Process Study

FIG NO. 8.7g FIGURE TITLE Disturbance Mapping

CREATED BY E. Kirchner LOCATION I:\Projects\3001765 - Georges River Estuary Process Study\900Data\GIS\ArcView Files\working files



**SMEC**





© SMEC Australia Pty Ltd 2010. All Rights Reserved













Data Source - Disturbance: The Native Vegetation of the Sydney Metropolitan Catchment Management Authority Area (Draft) (2009), NSW Department of Environment, Climate Change and Water, Hurstville, NSW Australia.

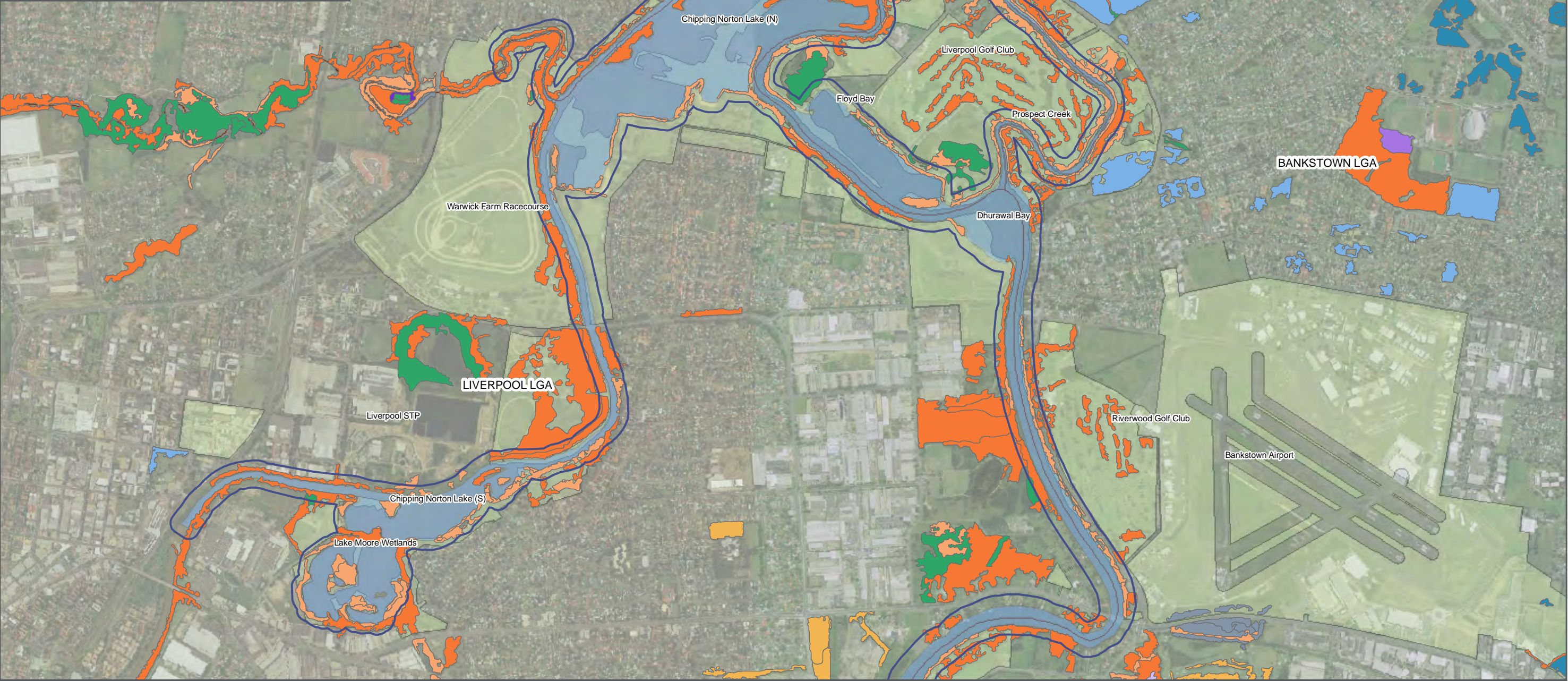


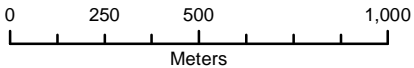


**LEGEND**

-  Study area
-  LGAs
-  NSW National Parks and Wildlife Service (NPWS) Estates
-  Parks and Gardens

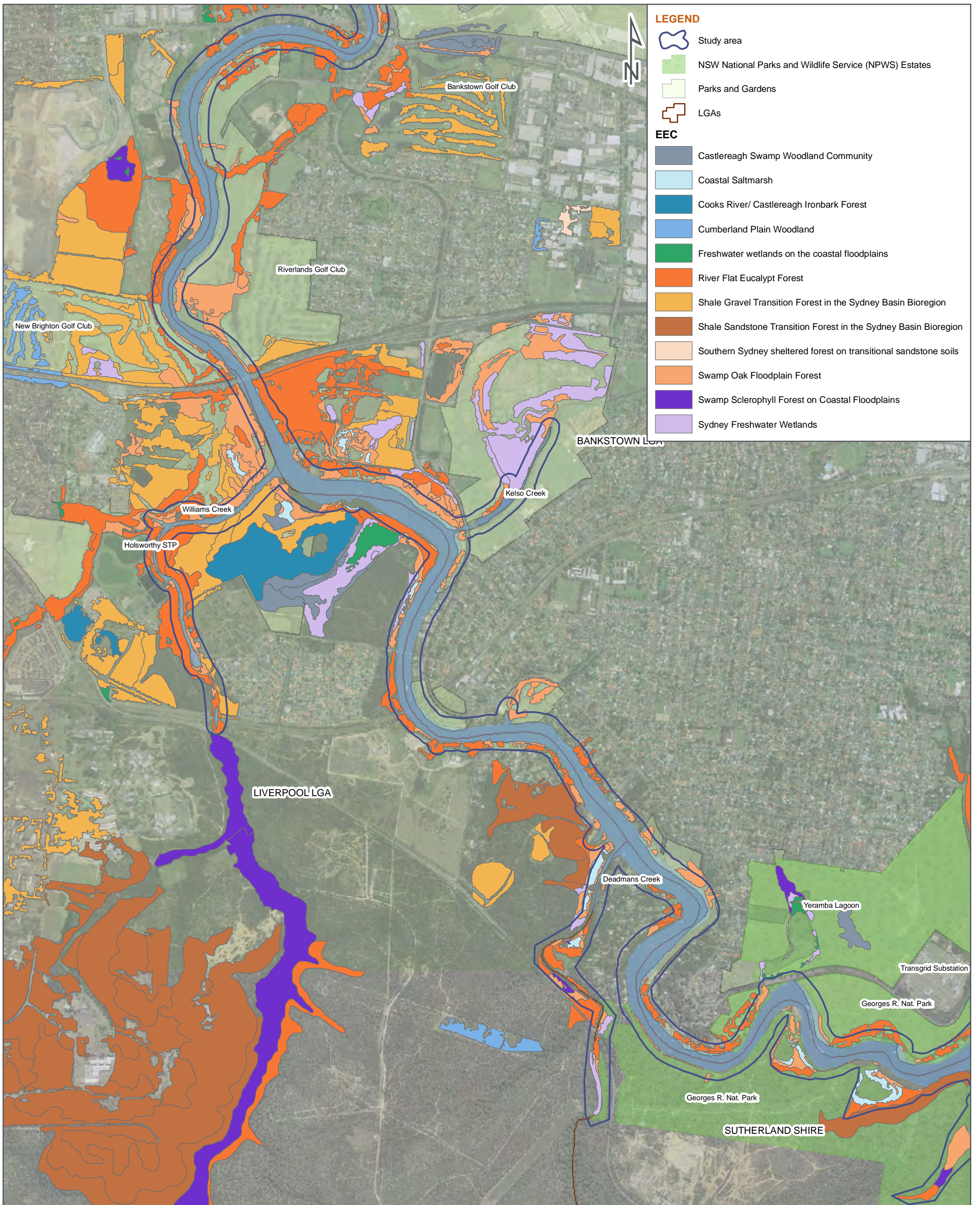
**EEC**

-  Castlereagh Swamp Woodland Community
-  Cooks River/ Castlereagh Ironbark Forest
-  Cumberland Plain Woodland
-  Freshwater wetlands on the coastal floodplains
-  River Flat Eucalypt Forest
-  Shale Gravel Transition Forest in the Sydney Basin Bioregion
-  Swamp Oak Floodplain Forest
-  Swamp Sclerophyll Forest on Coastal Floodplains
-  Sydney Freshwater Wetlands
-  Sydney Turpentine-Ironbark Forest












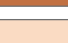
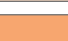





<p><b>DATE</b> 13/04/2010</p>	<p><b>SCALE</b> 1:20,000</p> 	<p><b>PAGE SIZE</b> A3</p>	<p><b>COORDINATE SYSTEM</b> MGA Z56</p>	<p><b>FIG NO.</b> 8.8a</p>	<p><b>FIGURE TITLE</b> Endangered Ecological Communities</p>	 <p>© SMEC Australia Pty Ltd 2010. All Rights Reserved.</p>	
<p><b>PROJECT NO.</b> 3001765</p>	<p><b>PROJECT TITLE</b> Georges River Estuary Process Study</p>		<p><b>CREATED BY</b> E. Kirchner</p>	<p><b>LOCATION</b> I:\Projects\3001765 - Georges River Estuary Process Study\009 DATA\GIS\ArcView Files\Working files</p>			<p><small>Data Source - Vegetation: The Native Vegetation of the Sydney Metropolitan Catchment Management Authority Area (Draft) (2009). NSW Department of Environment, Climate Change and Water, Hurstville, NSW Australia.</small></p> 

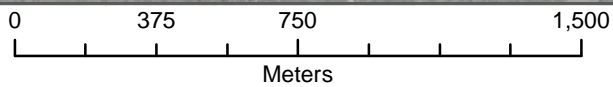




**LEGEND**

-  Study area
-  NSW National Parks and Wildlife Service (NPWS) Estates
-  Parks and Gardens
-  LGAs
- EEC**
-  Castlereagh Swamp Woodland Community
-  Coastal Saltmarsh
-  Cooks River/ Castlereagh Ironbark Forest
-  Cumberland Plain Woodland
-  Freshwater wetlands on the coastal floodplains
-  River Flat Eucalypt Forest
-  Shale Gravel Transition Forest in the Sydney Basin Bioregion
-  Shale Sandstone Transition Forest in the Sydney Basin Bioregion
-  Southern Sydney sheltered forest on transitional sandstone soils
-  Swamp Oak Floodplain Forest
-  Swamp Sclerophyll Forest on Coastal Floodplains
-  Sydney Freshwater Wetlands

DATE 13/04/2010 SCALE 1:20,000



PAGE SIZE A3

COORDINATE SYSTEM  
MGA Z56

PROJECT NO. 3001765

PROJECT TITLE Georges River Estuary Process Study

FIG NO. 8.8b

FIGURE TITLE Endangered Ecological Communities

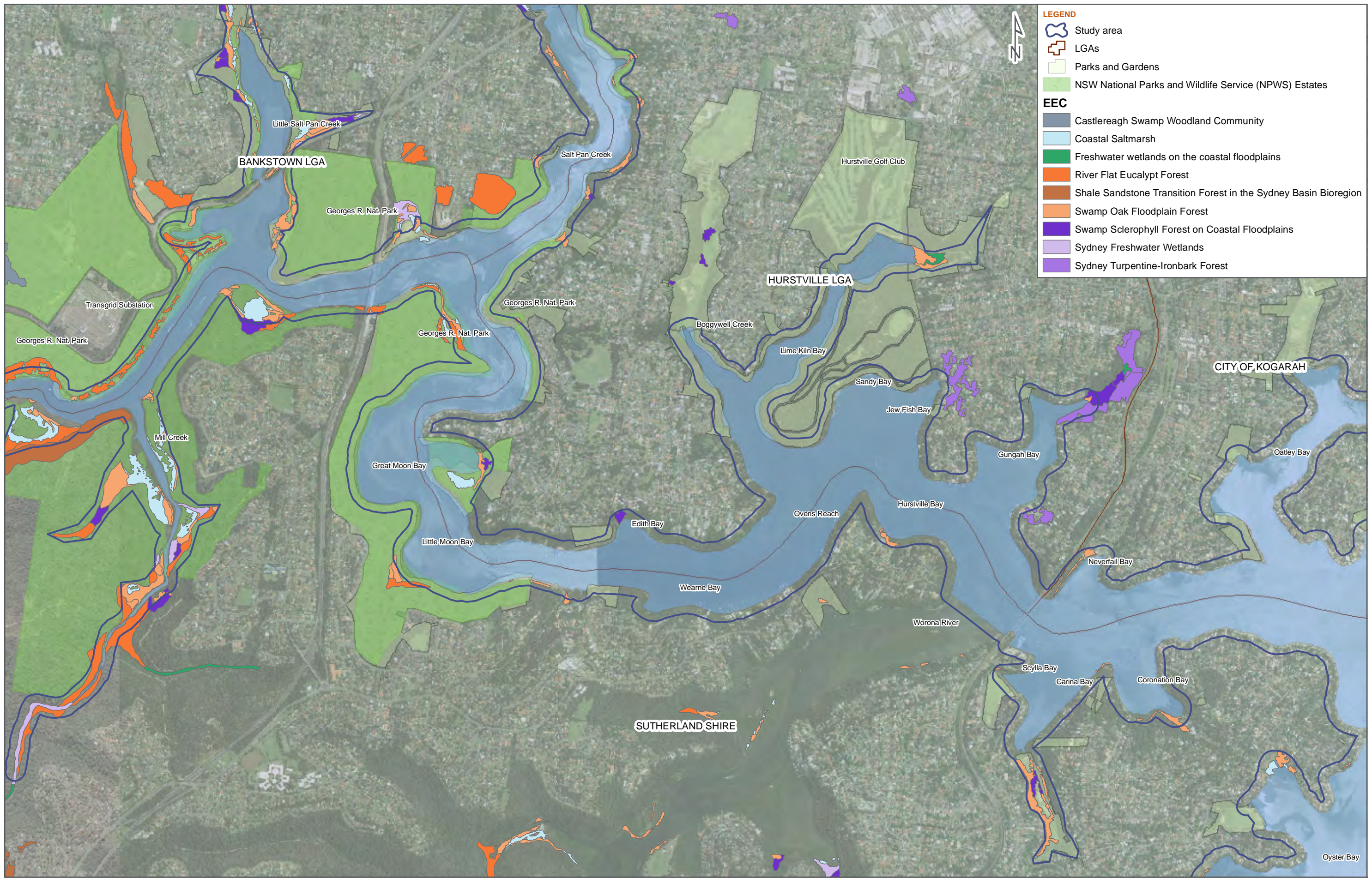
CREATED BY E. Kirchner

LOCATION I:\Projects\3001765 - Georges River Estuary Process Study\009 DATA\GIS\ArcView Files\Working files



Data Source - Vegetation: The Native Vegetation of the Sydney Metropolitan Catchment Management Authority Area (Draft) (2009), NSW Department of Environment, Climate Change and Water, Hurstville, NSW Australia.





DATE 13/04/2010 SCALE 1:20,000

0 250 500 1,000  
Meters

PAGE SIZE A3

COORDINATE SYSTEM MGA Z56

FIG NO. 8.8c

FIGURE TITLE Endangered Ecological Communities

PROJECT NO. 3001765

PROJECT TITLE Georges River Estuary Process Study

CREATED BY E. Kirchner

LOCATION I:\Projects\3001765 - Georges River Estuary Process Study\900Data\GIS\ArcView Files\working files



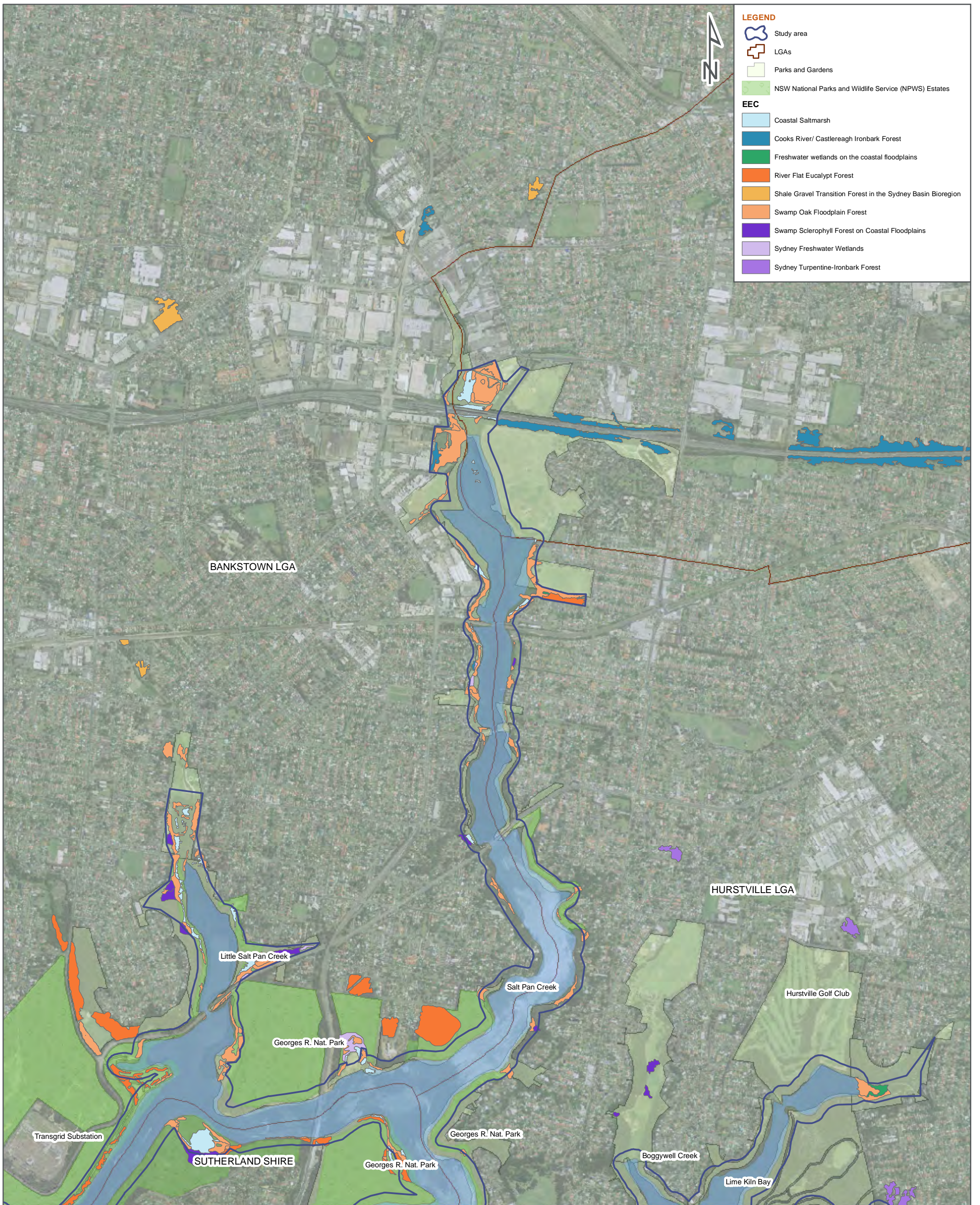
**SMC**

© SMC Australia Pty Ltd 2010. All Rights Reserved.

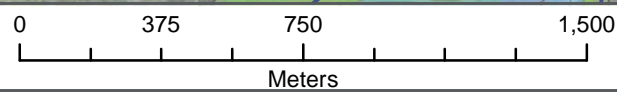
Data Source - Vegetation: The Native Vegetation of the Sydney Metropolitan Catchment Management Authority Area (Draft) (2009). NSW Department of Environment, Climate Change and Water, Hurstville, NSW Australia.







DATE 13/04/2010 SCALE 1:20,000



PAGE SIZE A3 COORDINATE SYSTEM MGA Z56

PROJECT NO. 3001765 PROJECT TITLE Georges River Estuary Process Study

FIG NO. 8.8d FIGURE TITLE Endangered Ecological Communities

CREATED BY E. Kirchner LOCATION I:\Projects\3001765 - Georges River Estuary Process Study\900Data\GIS\ArcView Files\working files

© SMEC Australia Pty Ltd 2010. All Rights Reserved.

Data Source - Vegetation: The Native Vegetation of the Sydney Metropolitan Catchment Management Authority Area (Draft) (2009). NSW Department of Environment, Climate Change and Water. Hurstville, NSW Australia.