

LEGEND

- Study area
- LGAs
- NSW National Parks and Wildlife Service (NPWS) Estates
- Parks and Gardens

EEC

- Bangalay Sand Forest
- Coastal Saltmarsh
- Cumberland Plain Woodland
- Shale Gravel Transition Forest in the Sydney Basin Bioregion
- Swamp Oak Floodplain Forest
- Swamp Sclerophyll Forest on Coastal Floodplains
- Sydney Turpentine-Ironbark Forest

DATE 13/04/2010 SCALE 1:20,000 PAGE SIZE A3 COORDINATE SYSTEM MGA Z56

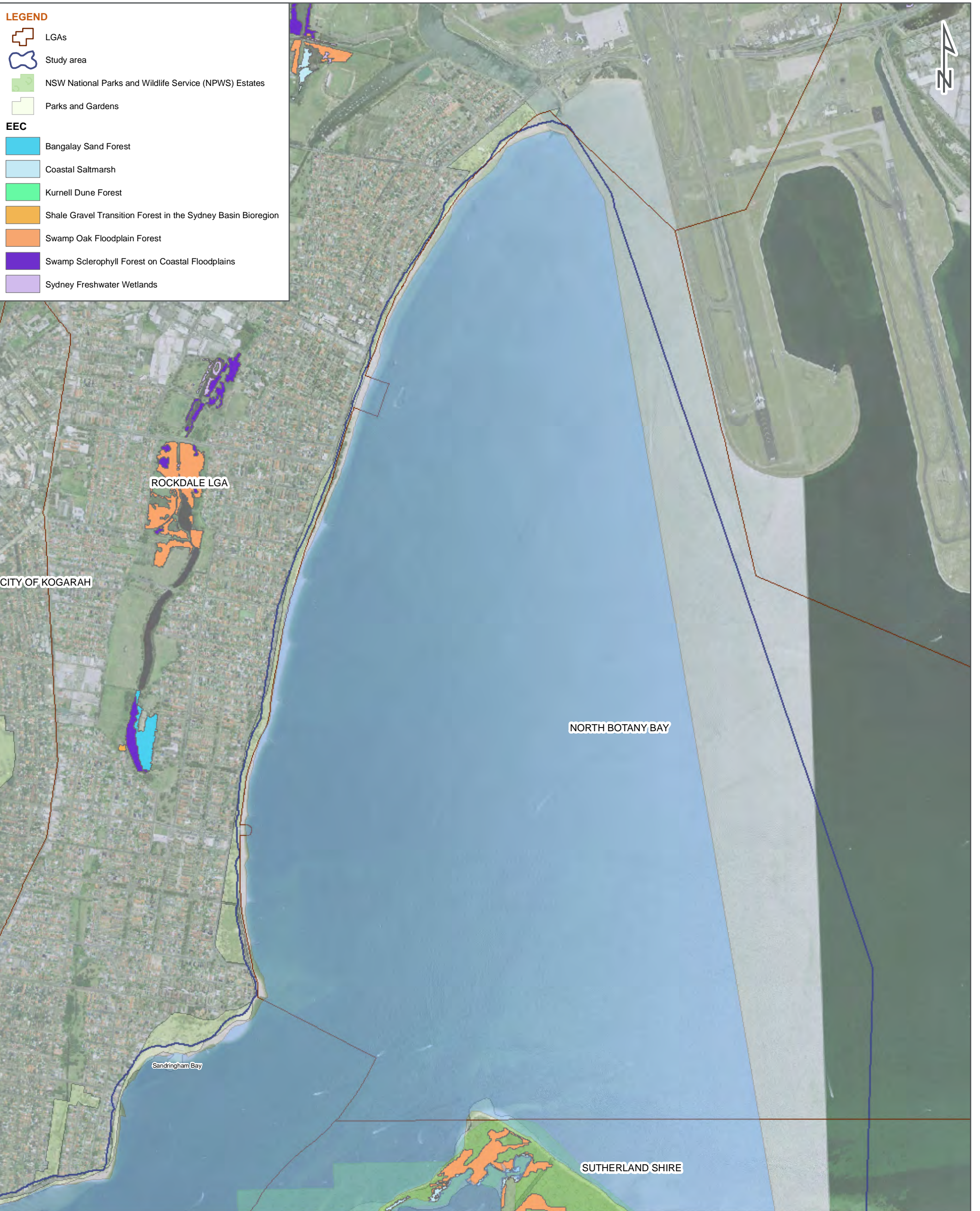
PROJECT NO. 3001765 PROJECT TITLE Georges River Estuary Process Study

FIG NO. 8.8e FIGURE TITLE Endangered Ecological Communities

CREATED BY E. Kirchner LOCATION I:\Projects\3001765 - Georges River Estuary Process Study\900Data\GIS\ArcView Files\working files

© SMEC Australia Pty Ltd 2010. All Rights Reserved.

Data Source - Vegetation: The Native Vegetation of the Sydney Metropolitan Catchment Management Authority Area (Draft) (2009), NSW Department of Environment, Climate Change and Water, Hurstville, NSW Australia.



DATE 13/04/2010 SCALE 1:20,000 0 370 740 1,480
Meters

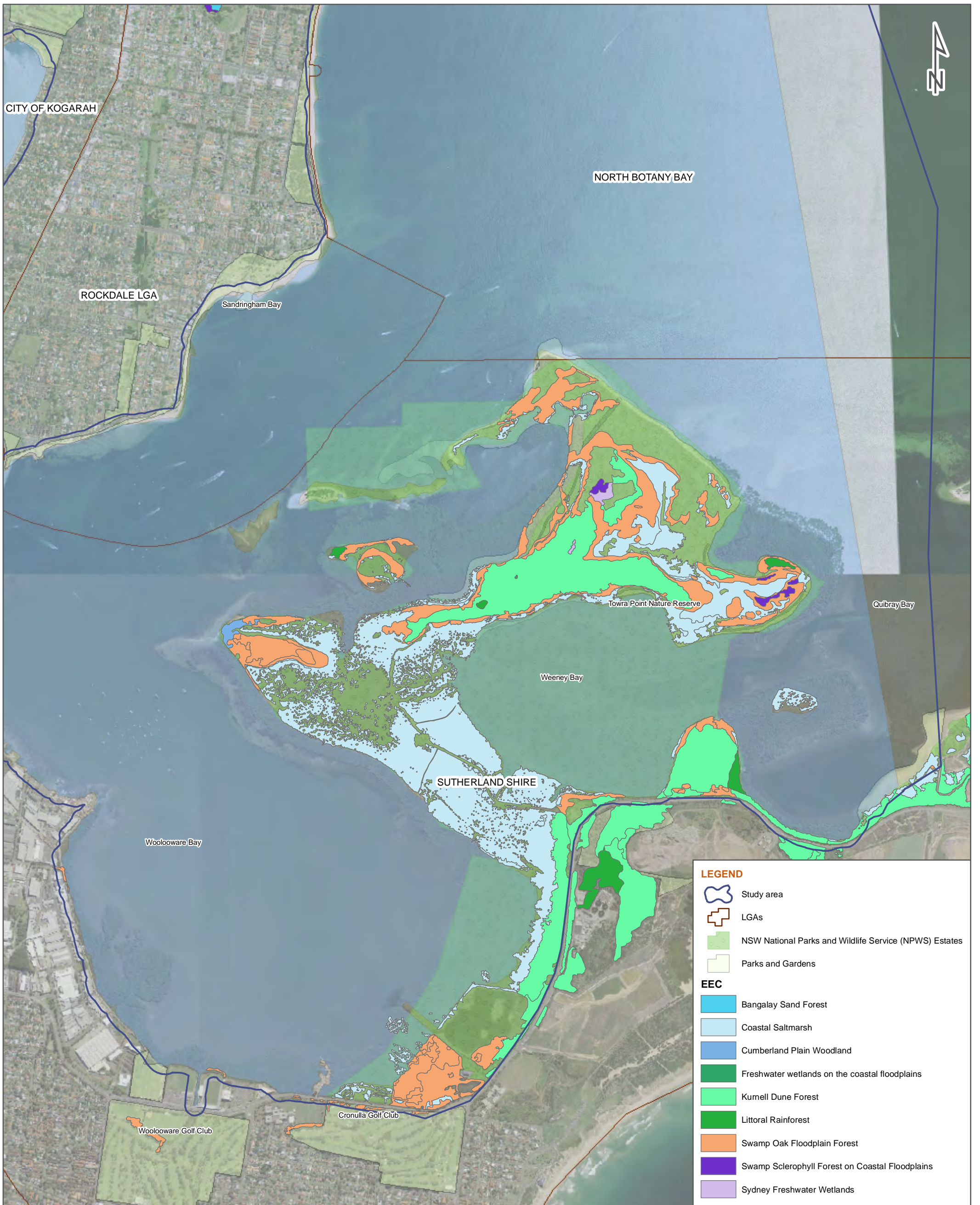
PAGE SIZE A3 COORDINATE SYSTEM MGA Z56

PROJECT NO. 3001765 PROJECT TITLE Georges River Estuary Process Study

FIG NO. 8.8f FIGURE TITLE Endangered Ecological Communities

CREATED BY E. Kirchner LOCATION I:\Projects\3001765 - Georges River Estuary Process Study\900Data\GIS\ArcView Files\working files

Data Source - Vegetation: The Native Vegetation of the Sydney Metropolitan Catchment Management Authority Area (Draft) (2009), NSW Department of Environment, Climate Change and Water, Hurstville, NSW Australia.



DATE 13/04/2010 SCALE 1:20,000

PAGE SIZE A3 COORDINATE SYSTEM MGA Z56

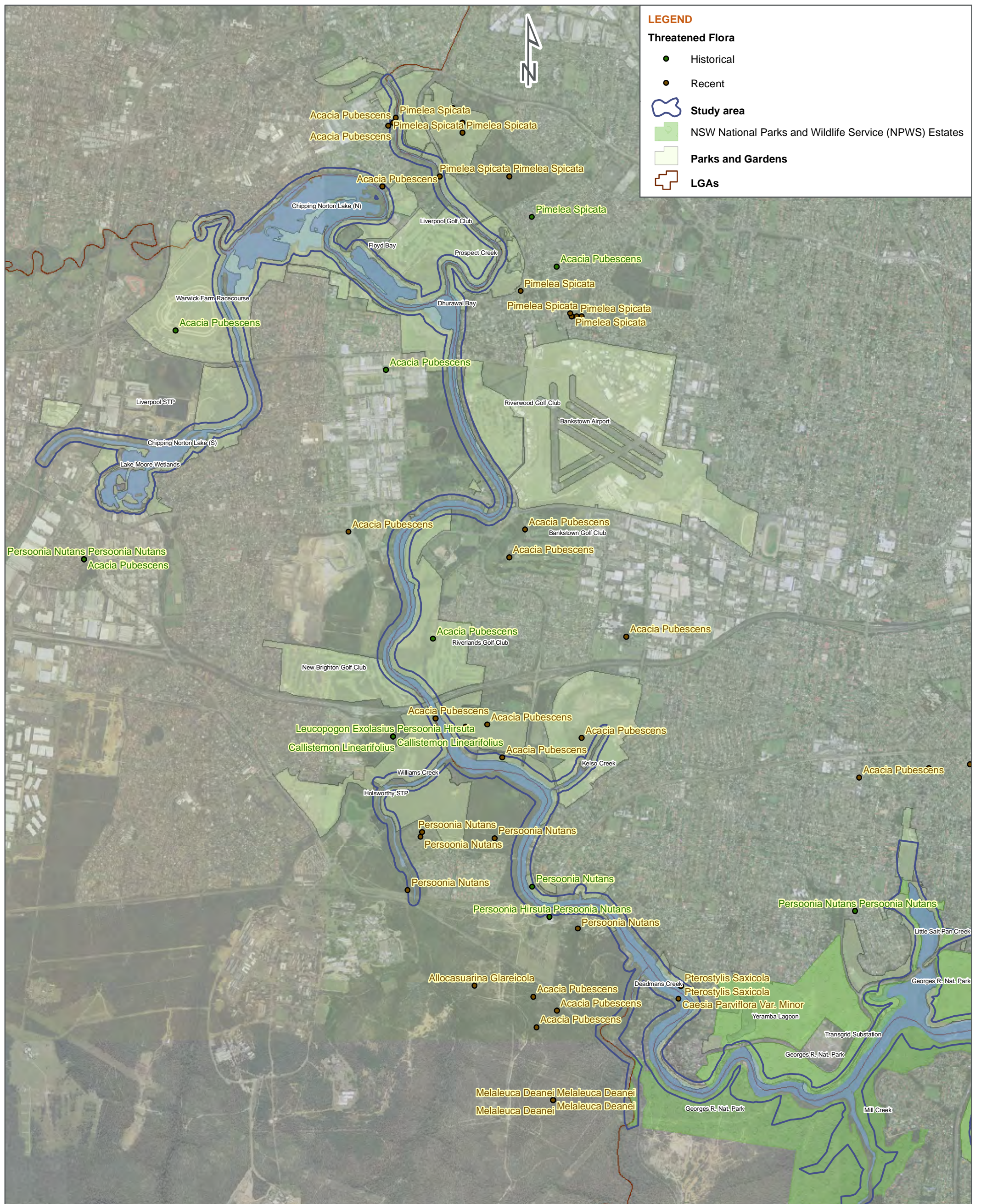
PROJECT NO. 3001765 PROJECT TITLE Georges River Estuary Process Study

FIG NO. 8.8g FIGURE TITLE Endangered Ecological Communities

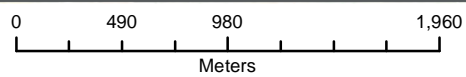
CREATED BY E. Kirchner LOCATION I:\Projects\3001765 - Georges River Estuary Process Study\900Data\GIS\ArcView Files\working files

© SMEC Australia Pty Ltd 2010. All Rights Reserved.

Data Source - Vegetation: The Native Vegetation of the Sydney Metropolitan Catchment Management Authority Area (Draft) (2009), NSW Department of Environment, Climate Change and Water, Hurstville, NSW Australia.



DATE 13/04/2010 SCALE 1:35,000



PAGE SIZE A3

COORDINATE SYSTEM
MGA Z56

PROJECT NO. 3001765

PROJECT TITLE Georges River Estuary Process Study

FIG NO. 8.9a

FIGURE TITLE Threatened Flora species recorded within the study area

CREATED BY E. Kirchner

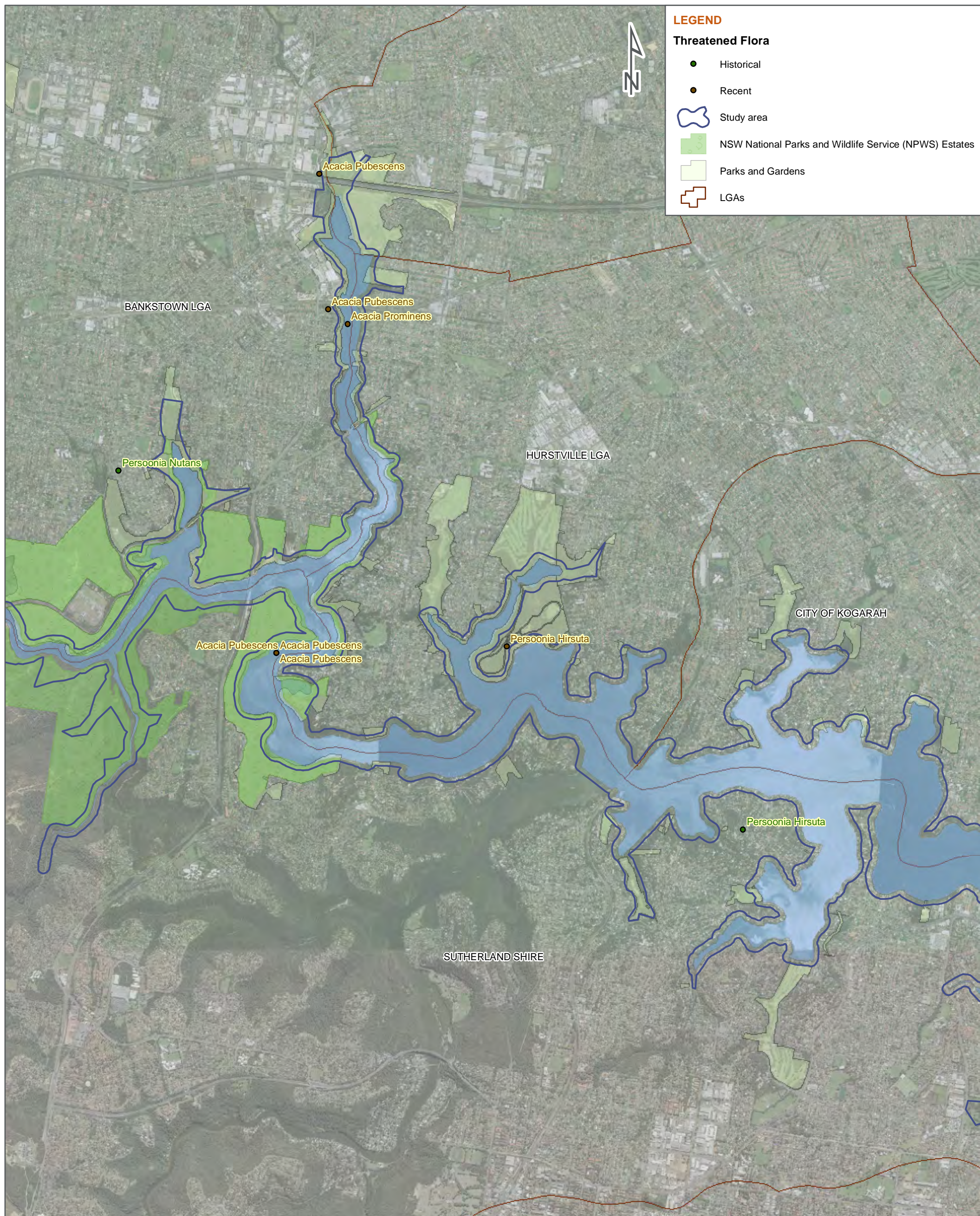
LOCATION I:\Projects\3001765 - Georges River Estuary Process Study\900Data\GIS\
ArcView Files\working files



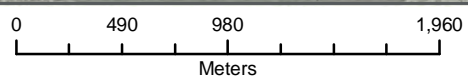
© SMEC Australia Pty Ltd 2010.
All Rights Reserved



Data Source - Threatened Flora and Fauna: New South Wales National Parks and Wildlife Service (NSW NPWS) (2010) Wildlife Atlas Database, Accessed January 2010. Department of Environment, Climate Change and Water.



DATE 13/04/2010 SCALE 1:35,000



PAGE SIZE A3

COORDINATE SYSTEM
MGA Z56

PROJECT NO. 3001765

PROJECT TITLE Georges River Estuary Process Study

FIG NO. 8.9b

FIGURE TITLE Threatened Flora species recorded within the study area

CREATED BY E. Kirchner

LOCATION I:\Projects\3001765 - Georges River Estuary Process
Study\900Data\GIS\ArcView Files\working files



© SMEC Australia Pty Ltd 2010.
All Rights Reserved



Data Source - Threatened Flora and Fauna: New South Wales National Parks and Wildlife Service (NSW NPWS) (2010) Wildlife Atlas Database, Accessed January 2010. Department of Environment, Climate Change and Water.

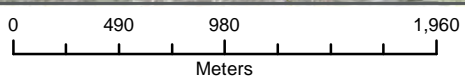
LEGEND

Threatened Flora

- Historical
- Recent
- NSW National Parks and Wildlife Service (NPWS) Estates
- Parks and Gardens
- Study area
- Study Area LGAs



DATE 13/04/2010 SCALE 1:35,000



PAGE SIZE A3

COORDINATE SYSTEM
MGA Z56

PROJECT NO. 3001765

PROJECT TITLE Georges River Estuary Process Study

FIG NO. 8.9c

FIGURE TITLE Threatened Flora species recorded within the study area

CREATED BY E. Kirchner

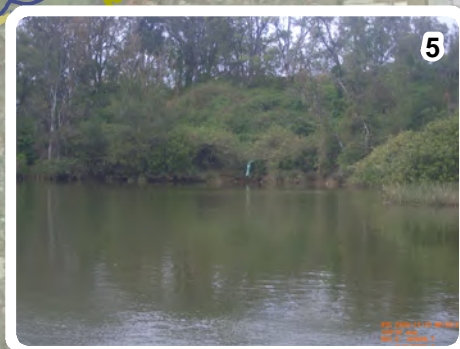
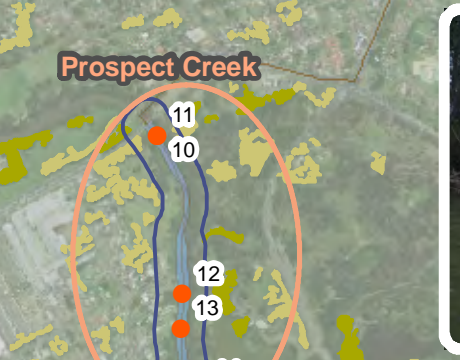
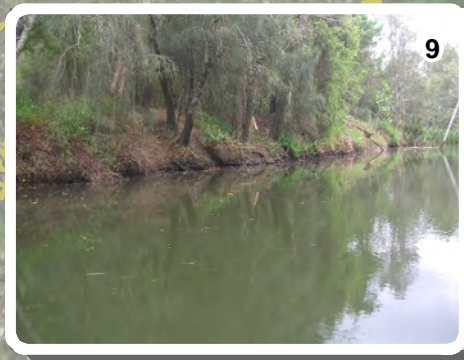
LOCATION I:\Projects\3001765 - Georges River Estuary Process Study\900Data\GIS
\ArcView Files\working files



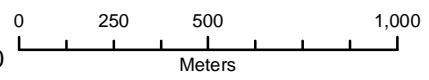
Data Source - Threatened Flora and Fauna: New South Wales National Parks and Wildlife Service (NSW NPWS) (2010) Wildlife Atlas Database, Accessed January 2010. Department of Environment, Climate Change and Water.

LEGEND

- Weed Photos
- Study area
- LGAs
- SMCMA Vegetation**
- Urban Exotic/Native
- Weeds and Exotics



DATE 13/04/2010 SCALE 1:20,000



PAGE SIZE A3

COORDINATE SYSTEM MGA Z56

FIG NO. 8.10a

FIGURE TITLE Disturbance Hotspots

PROJECT NO. 3001765

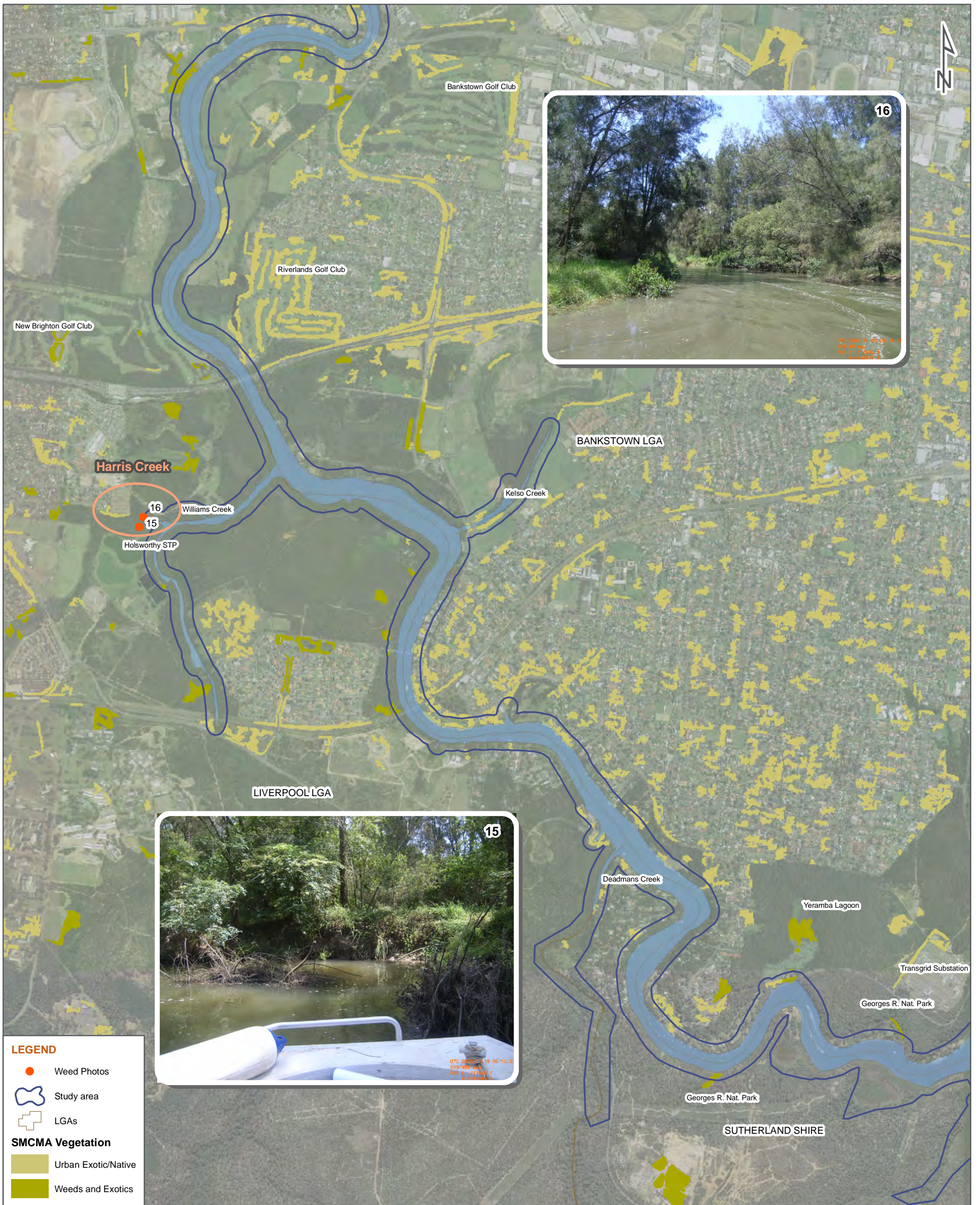
PROJECT TITLE Georges River Estuary Process Study

CREATED BY E. Kirchner

LOCATION I:\Projects\3001765 - Georges River Estuary Process Study\009 DATA\GIS\ArcView Files\Working files

Data Source - Vegetation: The Native Vegetation of the Sydney Metropolitan Catchment Management Authority Area (Draft) (2009). NSW Department of Environment, Climate Change and Water, Hurstville, NSW Australia.





LEGEND

- Weed Photos
- Study area
- LGAs

SMCMA Vegetation

- Urban Exotic/Native
- Weeds and Exotics

DATE 13/04/2010 SCALE 1:20,000 0 375 750 1,500 PAGE SIZE A3 COORDINATE SYSTEM MGA Z56

Meters

PROJECT NO. 3001765 PROJECT TITLE Georges River Estuary Process Study

FIG NO. 8.10b FIGURE TITLE Disturbance Hotspots

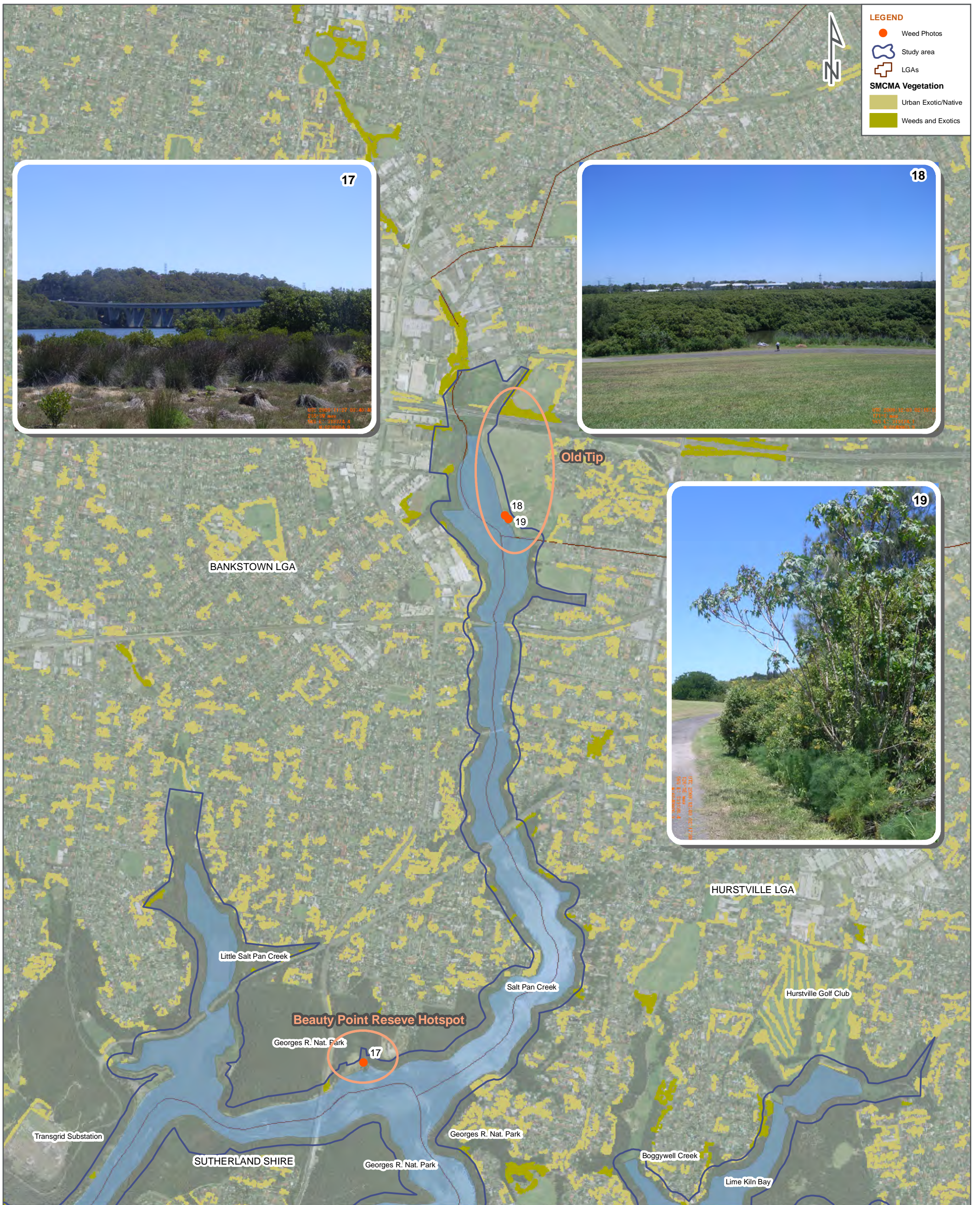
CREATED BY E. Kirchner LOCATION I:\Projects\3001765 - Georges River Estuary Process Study\009 DATA\GIS\ArcView Files\Working files



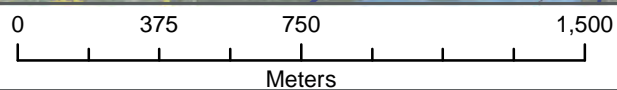
© SMEC Australia Pty Ltd 2010. All Rights Reserved.



Data Source - Vegetation: The Native Vegetation of the Sydney Metropolitan Catchment Management Authority Area (Draft) (2009), NSW Department of Environment, Climate Change and Water, Hurstville, NSW Australia.



DATE 13/04/2010 SCALE 1:20,000



PAGE SIZE A3

COORDINATE SYSTEM
MGA Z56

PROJECT NO. 3001765

PROJECT TITLE Georges River Estuary Process Study

FIG NO. 8.10c

FIGURE TITLE Disturbance Hotspots

CREATED BY E. Kirchner

LOCATION I:\Projects\3001765 - Georges River Estuary Process Study\900Data\GIS\ArcView Files\working files



© SMEC Australia Pty Ltd 2010.
All Rights Reserved

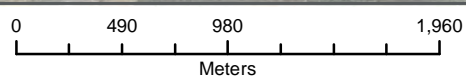


Data Source - Vegetation: The Native Vegetation of the Sydney Metropolitan Catchment Management Authority Area (Draft) (2009), NSW Department of Environment, Climate Change and Water, Hurstville, NSW Australia.





DATE 13/04/2010 SCALE 1:35,000



PAGE SIZE A3

COORDINATE SYSTEM
MGA Z56

PROJECT NO. 3001765

PROJECT TITLE Georges River Estuary Process Study

FIG NO. 8.11a

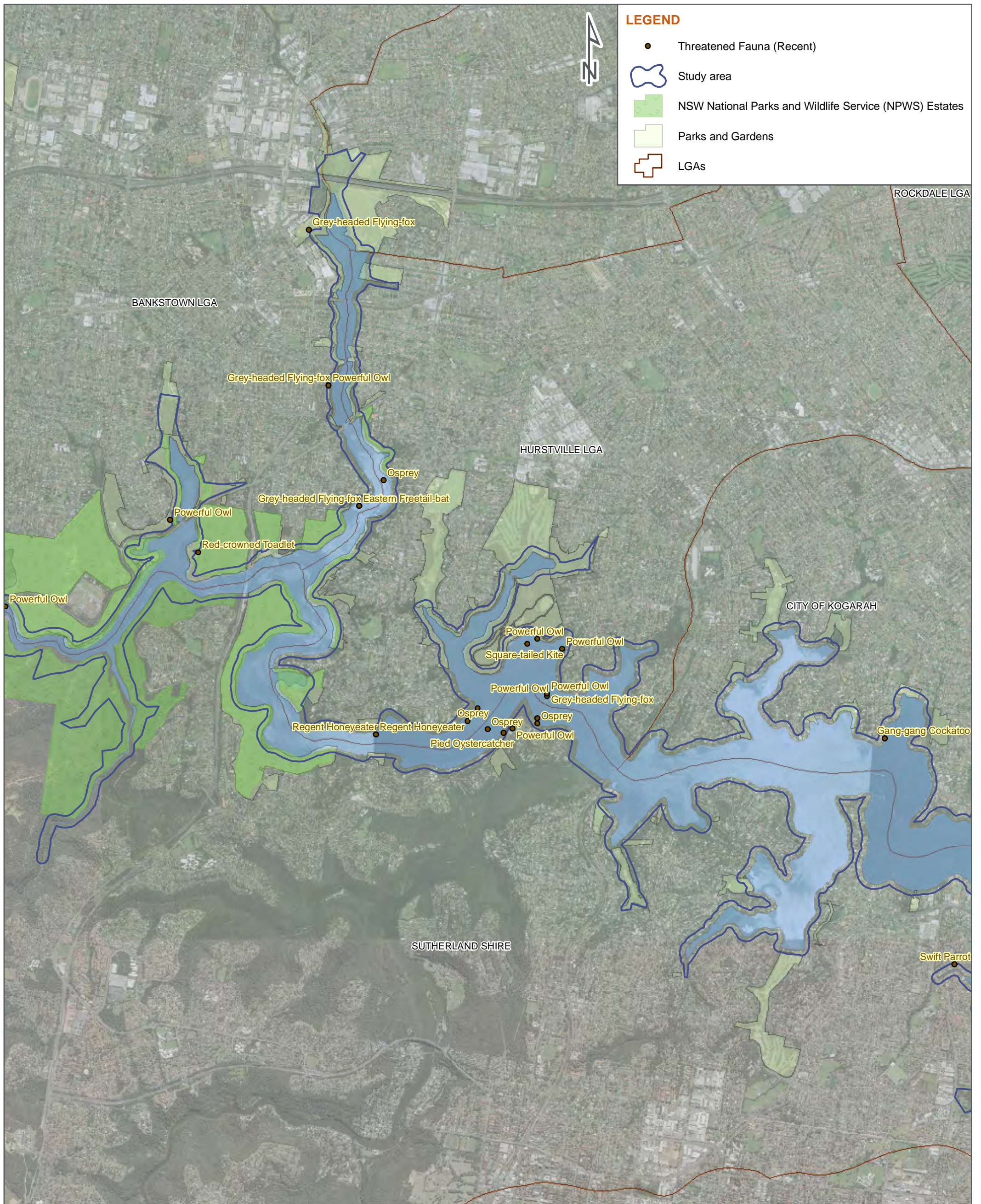
FIGURE TITLE Threatened Fauna species recorded within the study area

CREATED BY E. Kirchner

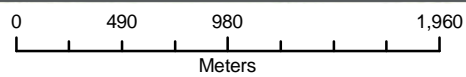
LOCATION I:\Projects\3001765 - Georges River Estuary Process Study\900Data\GIS\
ArcView Files\working files



Data Source - Threatened Flora and Fauna: New South Wales National Parks and Wildlife Service (NSW NPWS) (2010) Wildlife Atlas Database, Accessed January 2010. Department of Environment, Climate Change and Water.



DATE 13/04/2010 SCALE 1:35,000



PAGE SIZE A3

COORDINATE SYSTEM
MGA Z56

PROJECT NO. 3001765

PROJECT TITLE Georges River Estuary Process Study

FIG NO. 8.11b

FIGURE TITLE Threatened Fauna species recorded within the study area

CREATED BY E. Kirchner

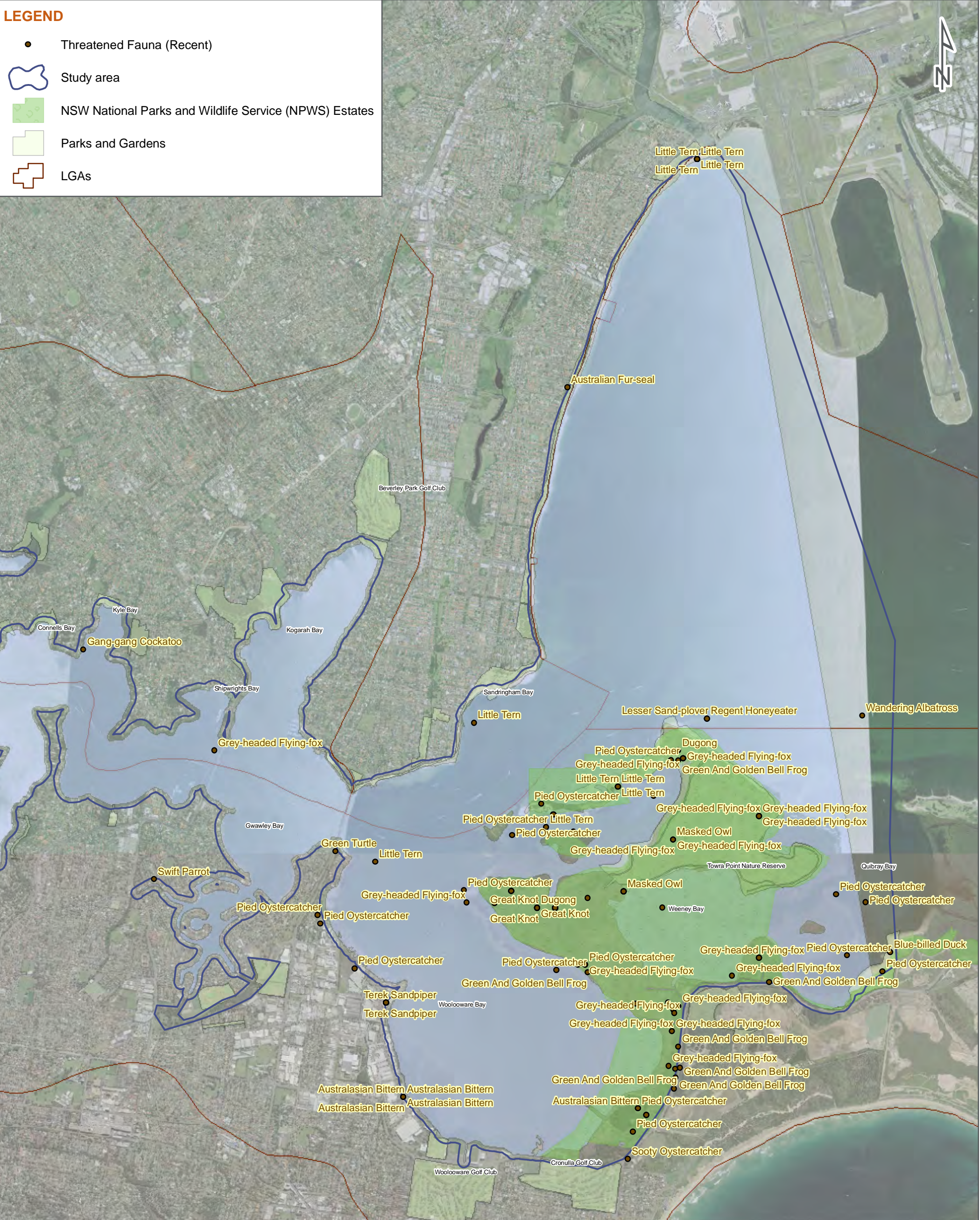
LOCATION I:\Projects\3001765 - Georges River Estuary Process Study\900Data\GIS\ArcView Files\working files



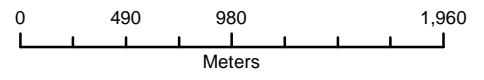
© SMEC Australia Pty Ltd 2010.
All Rights Reserved



Data Source - Threatened Flora and Fauna: New South Wales National Parks and Wildlife Service (NSW NPWS) (2010) Wildlife Atlas Database, Accessed January 2010. Department of Environment, Climate Change and Water.



DATE 13/04/2010 SCALE 1:35,000



PAGE SIZE A3 COORDINATE SYSTEM MGA Z56

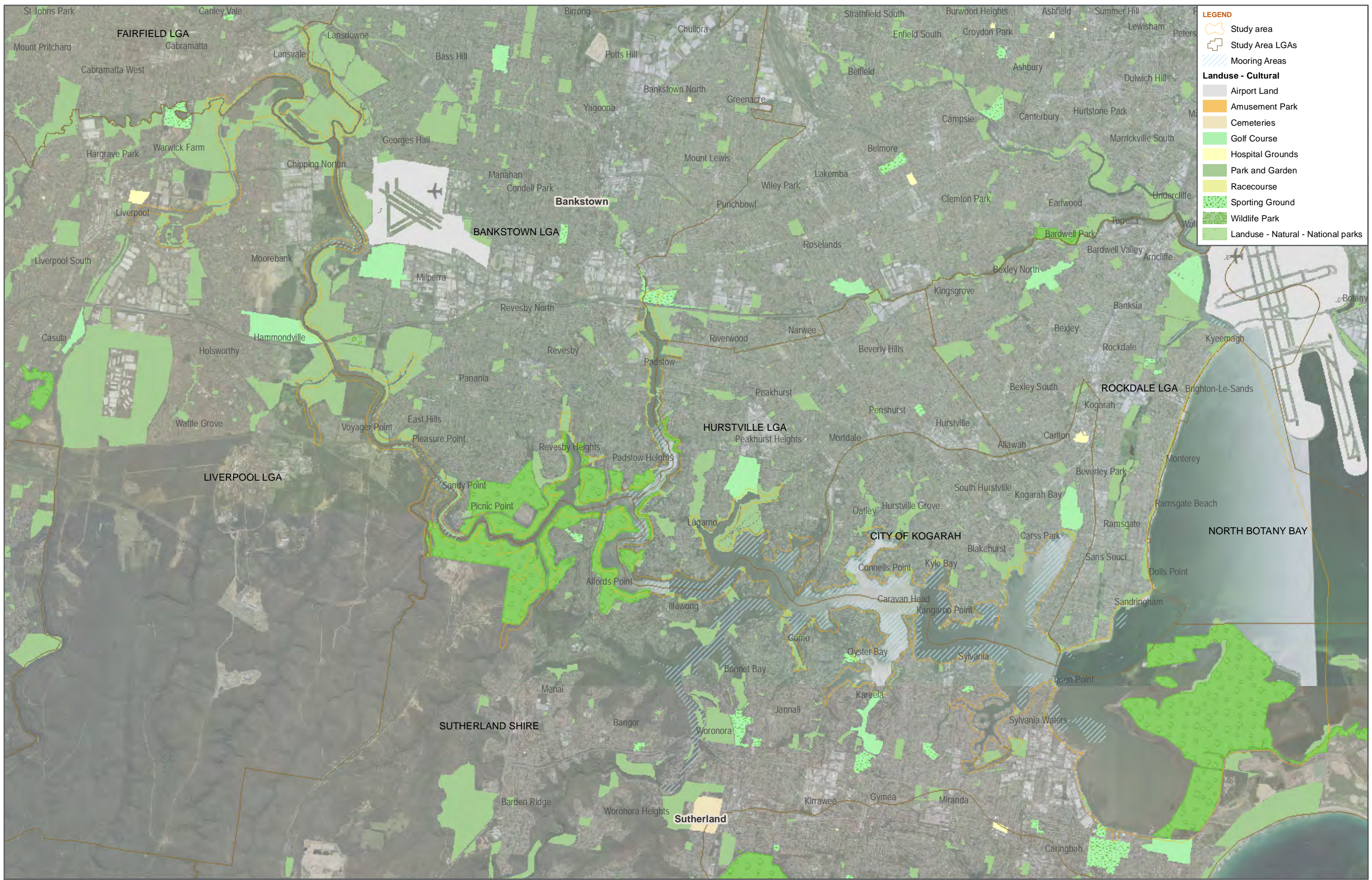


PROJECT NO. 3001765 PROJECT TITLE Georges River Estuary Process Study






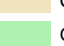





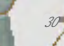

FIG NO. 8.11c FIGURE TITLE Threatened Fauna species recorded within the study area

CREATED BY E. Kirchner LOCATION I:\Projects\3001765 - Georges River Estuary Process Study\900Data\GIS\ArcView Files\working files

Data Source - Threatened Flora and Fauna: New South Wales National Parks and Wildlife Service (NSW NPWS) (2010) Wildlife Atlas Database, Accessed January 2010. Department of Environment, Climate Change and Water.



LEGEND

-  Study area
-  Study Area LGAs
-  Mooring Areas
- Landuse - Cultural**
-  Airport Land
-  Amusement Park
-  Cemeteries
-  Golf Course
-  Hospital Grounds
-  Park and Garden
-  Racecourse
-  Sporting Ground
-  Wildlife Park
-  Landuse - Natural - National parks

DATE 06/05/2010
SCALE 1:70,000



PAGE SIZE A3
COORDINATE SYSTEM MGA Z56

FIG NO. 9.2

FIGURE TITLE Recreational Landuse Within Study Area

PROJECT NO. 3001765

PROJECT TITLE Georges River Estuary Process Study

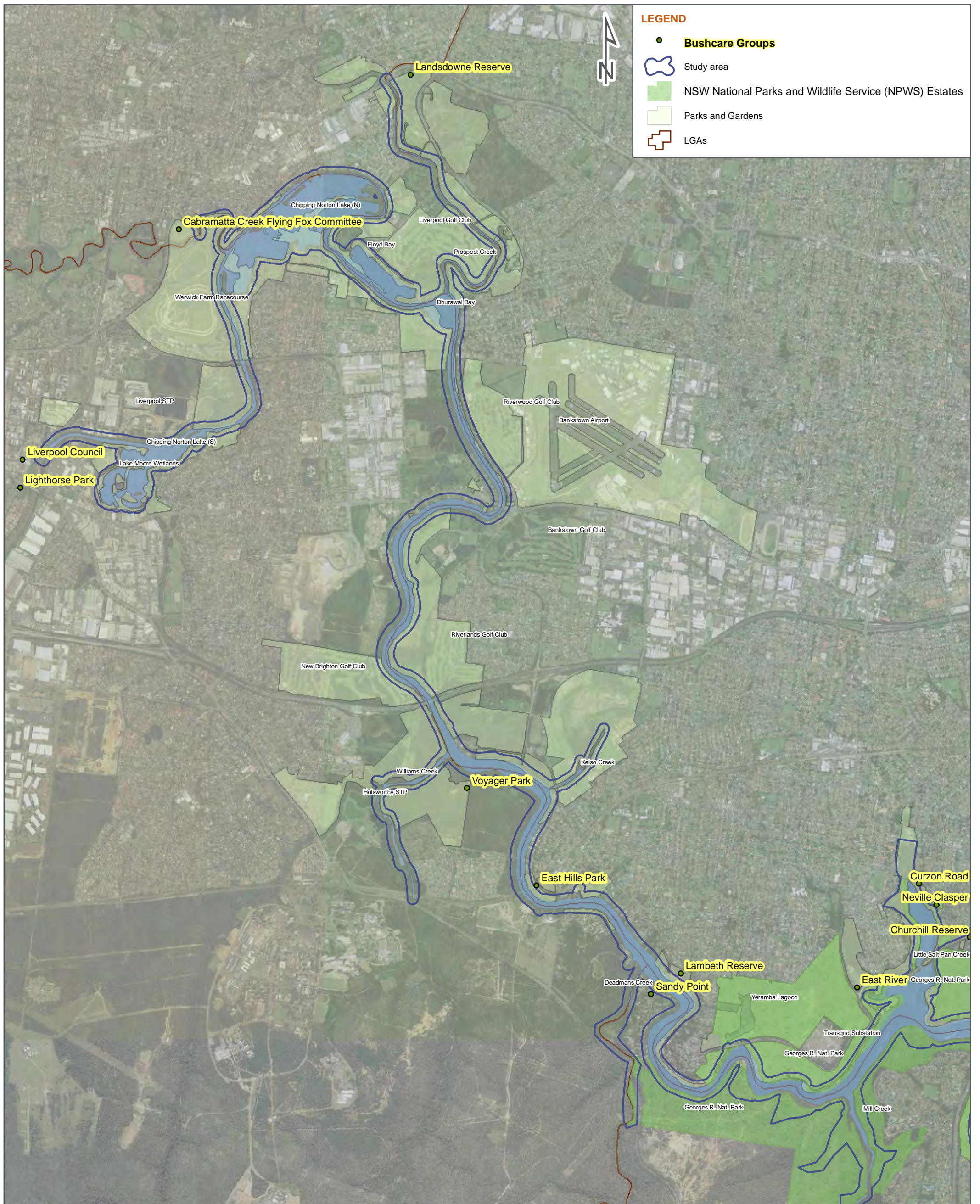
CREATED BY R. Chatfield

LOCATION I:\Projects\3001765 - Georges River Estuary Process Study\900Data\GIS\ArcView Files\working files

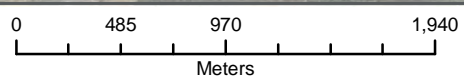


SMEC © SMEC Australia Pty Ltd 2010. All Rights Reserved





DATE 13/04/2010 SCALE 1:35,000



PAGE SIZE A3

COORDINATE SYSTEM
MGA Z56

PROJECT NO. 3001765

PROJECT TITLE Georges River Estuary Process Study

FIG NO. 9.3a

FIGURE TITLE Bush Regeneration Groups

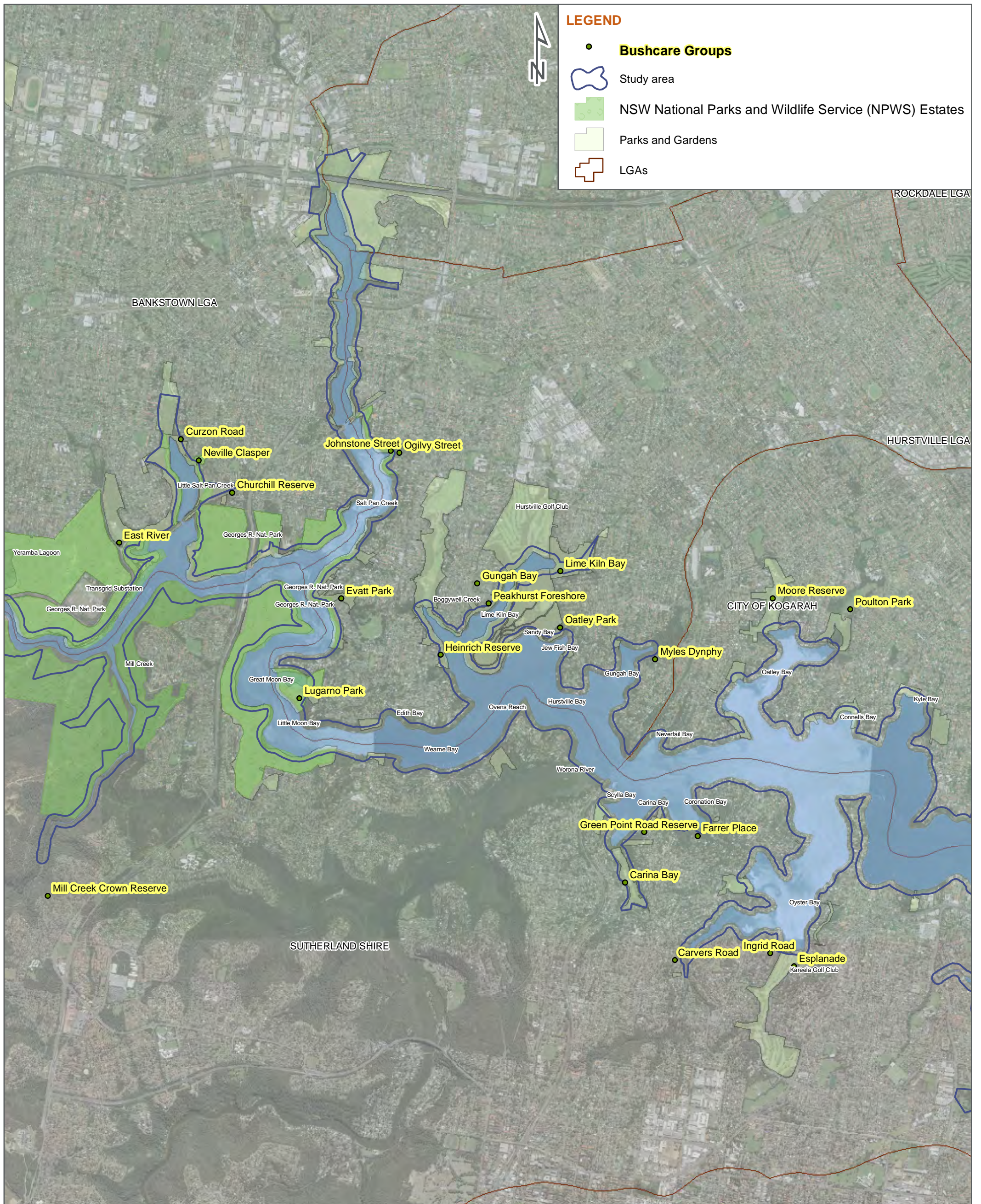
CREATED BY E. Kirchner

LOCATION I:\Projects\3001765 - Georges River Estuary Process Study\900Data\GIS\
ArcView Files\working files

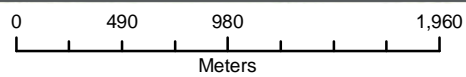


© SMEC Australia Pty Ltd 2010.
All Rights Reserved





DATE 13/04/2010 SCALE 1:35,000



PAGE SIZE A3

COORDINATE SYSTEM
MGA Z56

PROJECT NO. 3001765

PROJECT TITLE Georges River Estuary Process Study

FIG NO. 9.3b

FIGURE TITLE Bush Regeneration Groups

CREATED BY E. Kirchner

LOCATION I:\Projects\3001765 - Georges River Estuary Process Study\900Data\GIS\ArcView Files\working files

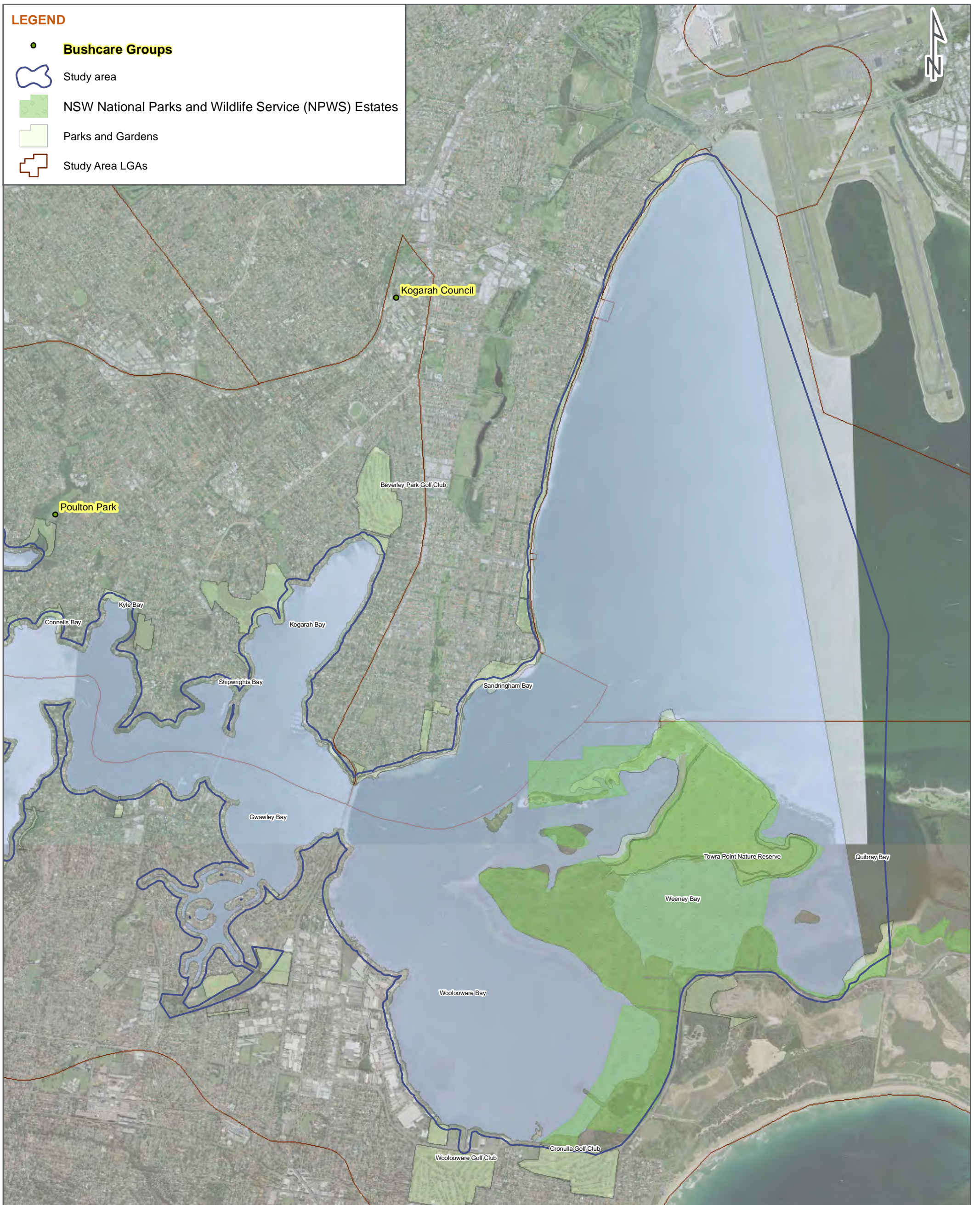


© SMEC Australia Pty Ltd 2010.
All Rights Reserved

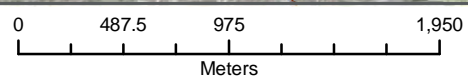


LEGEND

- **Bushcare Groups**
- Study area
- NSW National Parks and Wildlife Service (NPWS) Estates
- Parks and Gardens
- Study Area LGAs



DATE 13/04/2010 SCALE 1:35,000



PAGE SIZE A3

COORDINATE SYSTEM
MGA Z56

PROJECT NO. 3001765

PROJECT TITLE Georges River Estuary Process Study

FIG NO. 9.3c

FIGURE TITLE Bush Regeneration Groups

CREATED BY E. Kirchner

LOCATION I:\Projects\3001765 - Georges River Estuary Process Study\900Data\GIS
\ArcView Files\working files

